

MARCH 2024  
MAGAZINE FOR MEMBERS

# WETA



## WETA series spotlights the food scene around D.C.

New episodes air Mondays, March 4, 11 & 25  
9 p.m. on WETA PBS; 8 p.m. on WETA Metro  
Stream on the PBS App



# WETA Focus



**W**ETA presents fascinating television offerings across our channels in March, from a wide slate of Women’s History Month films anchored by the *American Experience* miniseries *The Vote* — chronicling the campaign for women’s suffrage in America — to an examination of Artificial Intelligence on *NOVA* and an *American Masters* biography of U.S. Senator and diplomat Daniel Patrick Moynihan; from a new season of *Call the Midwife* and new *Masterpiece* dramas to more new episodes of our popular local restaurant series *Signature Dish*. Among other scheduled programs are an appreciation of the landmark 1990 Ken Burns and WETA film *The Civil War* and a brand new two-part film from Ric Burns spotlighting the Italian poet Dante Alighieri and his enduring literary masterpiece “The Divine Comedy.”

Perhaps the timeliest programs this month, however, are in the realm of news and public affairs. In such a busy current news cycle, among the most important responsibilities of public media is to help inform the American people by

contextualizing events and illuminating issues and ideas through news coverage that puts accuracy, substance and balance first. Our programs *PBS NewsHour* and *PBS News Weekend* — created by NewsHour Productions, a wholly owned nonprofit subsidiary of WETA — are renowned for their trusted news reports and high standard of journalistic excellence and integrity. In addition to our regular newscasts this month, on Thursday, March 7 at 9 p.m., the NewsHour team will cover and analyze President Biden’s State of the Union address to Congress and the American people — and the Republican Party’s response. For additional incisive analysis of current news by top reporters on the national politics beat, tune in each Friday night to our award-winning news forum *Washington Week with The Atlantic*.

In other WETA news, I am pleased to share that two WETA co-productions recently have been honored with Emmy Awards. The 2022 Florentine Films and WETA co-production *The U.S. and the Holocaust*, written by Geoffrey C. Ward, won the Emmy for Outstanding Writing for a Nonfiction Program. The 2023 program *Joni Mitchell: The Library of Congress Gershwin Prize for Popular Song*, co-produced by WETA with the Library of Congress and Ken Ehrlich Productions, won Outstanding Musical Direction with arranger Greg Phillinganes at the helm. The awards are a testament to the enormous talent and creativity poured into these projects.

Thanks for watching and listening — and for your ongoing support for WETA that makes possible our many services to the public.

*Sharon Percy Rockefeller*

Sharon Percy Rockefeller  
President and Chief Executive Officer, WETA

## WETA – ON THE AIR & ONLINE

### WETA PBS

26.1 via antenna  
Comcast 26, 219, 800, 1026  
Cox 26, 1003, 1026  
DirecTV 26, 26-1, Stream  
Dish 8076 Fios 26, 526  
RCN 26, 613  
[YouTube.com/wetapbs](https://www.youtube.com/wetapbs)

### WETA UK

26.2 via antenna  
Comcast 265, 1146  
Cox 800  
Fios 474  
RCN 39, 602

### WETA Metro

26.5 via antenna  
[weta.org/livestream](https://weta.org/livestream)  
PBS App Cox 802  
YouTube TV  
Hulu + Live TV  
Comcast 270, 1148  
Fios 470 RCN 599

### WETA World

26.4 via antenna  
Fios 475  
RCN 37

COVER: SIGNATURE DISH HOST SETH TILLMAN  
WITH INGA SOCIAL CO-OWNER FITO GARCIA  
AND CHEF MICHAEL CUIFFARDI

## Signature Dish

**WETA local restaurant series presents new episodes, Mondays, March 4, 11 & 25 at 9 p.m. on WETA PBS, 8 p.m. on WETA Metro; stream on the PBS App**

The Emmy Award-winning WETA local restaurant series *Signature Dish* presents three new episodes in March with a surprisingly varied menu from restaurants in D.C., Maryland and Virginia. On Monday, March 4, the episode **Food Hall Finds** dives into one of the hottest food trends — food halls, which offer a wide array of cuisines and a shared dining space,

giving groups with different food preferences plenty of options for a great meal out. Series host Seth Tillman tastes three dishes that illuminate this variety: *chicken and beef sausage gumbo* at Puddin' in Union Market, the vegan *banh mi izzit sandwich* at Mush in the miXt Food Hall, and handmade *butifarra sausage* at Brasa in The Square.

The March 11 episode, **Savoring South America**, finds Seth exploring diverse Latin American flavors, beginning with *picanha steak* at Fire Pit BBQ. Then, the chefs at Inca Social break down an entire tuna when creating their *nikkei ceviche*. Seth rounds out the journey with *silpancho* — a Bolivian feast piled high with steak, eggs, rice and potatoes — at Kantutas.

The March 25 program, **Filipino Festival**, celebrates diverse flavors of the Philippines. Seth samples *adobo duck confit* at Hiraya, an *ube breakfast burger* at Egg Karne, and *bangus sisig* — featuring the national fish of the archipelago — at F&F Filipino Fusion.

Tune in to the March programs, and watch for one more Season 2 episode on April 1. Stream episodes on the PBS App or at [weta.org/signaturedish](http://weta.org/signaturedish). For more on the dishes spotlighted, visit [restaurants.wetaguides.org](http://restaurants.wetaguides.org).



JORDAN HOFFMAN FOR WETA

Sausages and sides at Brasa



AMANDA LEE FOR WETA

Host Seth Tillman with Puddin' chef Toyin Alli

## Women's Art Museum, Celtic Music, and Women in Jazz on WETA Arts

**Monday, March 11 at 9:30 p.m. on WETA PBS; 8:30 p.m. on WETA Metro; stream on the PBS App and at [weta.org](http://weta.org)**

In March, WETA's Emmy Award-winning local arts and culture series *WETA Arts* presents an inside look at the National Museum of Women in the Arts, the first museum in the world solely dedicated to championing women artists. After two years and nearly 70 million dollars in renovations, the Washington, D.C. museum has reopened its doors to the public. Next, fiddle virtuoso Seán Heely keeps the tradition of Scottish Celtic music alive through performances on big stages, in bars and pubs around the world, and right here at home at venues like the MacMillan Whisky Room in Fairfax, Virginia. Also on the program, meet Amy Bormet, a local jazz musician who founded Washington Women in Jazz — an organization dedicated to celebrating women in the D.C. jazz community. *WETA Arts* repeats Monday, March 25.



COURTESY AMY BORMET

Jazz artist Amy Bormet

**For program and membership inquiries, visit [weta.org](http://weta.org) or call 703-998-2724.**

### WETA PBS Kids

26.3 via antenna  
Comcast 266, 1147  
Cox 801  
Fios 472  
RCN 38

### WETA Online

[weta.org](http://weta.org)  
[weta.org/passport](http://weta.org/passport)  
[weta.org/pbsapp](http://weta.org/pbsapp)  
[weta.org/learningmedia](http://weta.org/learningmedia)

### WETA Classical

WETA 90.9 FM Washington, D.C.  
WGMS 89.1 FM Hagerstown  
[wetaclassical.org](http://wetaclassical.org)  
[vivalavoce.org](http://vivalavoce.org)  
WETA Classical App



BIG STUDIOS/REAL STREET PRODUCTIONS

## Call the Midwife, Series 13

Sundays at 8 p.m. starting March 17  
on WETA PBS & WETA Metro;  
stream on the PBS App

**P**opular drama *Call the Midwife*, created and written by Heidi Thomas, returns with a new, thirteenth season that continues to explore complex medical and personal situations on midwifery and nursing rounds in the Poplar neighborhood of London's East End. In the eight new episodes, it is now 1969, and more babies are being born in hospitals than ever before. Pressure on maternity beds remains extremely high across the country, but Poplar is coping

better than most areas due to the work of the nurse-midwife Sisters of Nonnatus House and the popularity of home births under their auspices. This season of the drama features stories of how poor housing continues to blight areas of the community, presenting complex social and health challenges to the Nonnatus team. Series 13 will also explore issues surrounding cerebral palsy, congenital hip dysplasia, tetanus, porphyria and tuberculosis. Episodes can be streamed on the PBS App and, before the broadcast premieres, with WETA Passport.



QUAY STREET PRODUCTIONS AND MASTERPIECE

## Nolly on Masterpiece

Sundays, March 17, 24 & 31 at 9 p.m.  
on WETA PBS & WETA Metro;  
stream on the PBS App

**I**n a new three-part *Masterpiece* presentation, Helena Bonham Carter (*The Crown*; *Harry Potter*) stars as soap opera legend Noelle “Nolly” Gordon, one of the most famous faces on British television in the 1960s and 1970s, whose betrayal and unceremonious firing from her hit soap opera series *Crossroads* at the height of her career was front-page news in the United Kingdom. Gordon had been one of the leads on the program for nearly 20 years. A bold exploration of how the establishment turns on women who refuse to play by the

rules, *Nolly* presents the story of Gordon's most tumultuous years and offers a sharp, affectionate and heart-breaking portrait of a forgotten icon. The biographical drama was written by Russell T. Davies (*Doctor Who*). Binge-watch the series with WETA Passport as of the broadcast premiere.



FREMANTLE

## Alice & Jack on Masterpiece

Sundays at 10 p.m. starting March 17  
on WETA PBS & WETA Metro;  
stream on the PBS App

**A** new six-part *Masterpiece* drama created and written by award-winning screenwriter Victor Levin (*Mad Men*; *Mad About You*) stars Academy Award-nominated actor Andrea Riseborough (*To Leslie*) alongside Domhnall Gleeson in a contemporary love story. When Alice and Jack first meet, they're bound by a connection so powerful it seems nothing can break it, but will their path lead them to a place of happiness and togetherness? Or will life and their own emotional complexities get in the way? Honest, intimate and funny, the series presents love in all its unexpected, kaleidoscopic

beauty. At the outset of their connection, a deep trauma from Alice's past presents an obstacle to their relationship. But both she and Jack reconnect over time as the two navigate life stages, crossroads decisions and significant challenges. Binge-watch the series with WETA Passport as of the broadcast premiere.

## American Masters: Daniel Patrick Moynihan

Friday, March 29 at 9 p.m. on WETA PBS & WETA Metro;  
stream on the PBS App

This month on biography series *American Masters*, discover the life and legacy of former U.S. Senator (D-NY) and diplomat Daniel Patrick Moynihan (1927-2003). The influential intellectual and sociologist, policy specialist and ambassador was considered to have one of the broadest public careers in U.S. political history. Moynihan served four terms in the Senate under four presidents — two Republicans and two Democrats. The public figure did not just live in the twentieth century, he strode across it, a colossus of ideas and a man of deeds. This first feature-length documentary about Moynihan’s life explores how, in an age of rigid ideologies, he embraced the contradictions and complexity of public policy without ever despairing of the role of government in the lives of its citizens.



UNITED STATES CONGRESS IMAGE/PUBLIC DOMAIN

## Dante: Inferno to Paradise

Ric Burns film airs Mon.-Tues., March 18 & 19  
at 8 p.m. on WETA PBS & WETA Metro;  
stream on the App

“Dante and Shakespeare divide the modern world between them; there is no third.” So wrote poet and literary critic T.S. Eliot in an essay nearly 100 years ago. Now, a landmark new program from filmmaker Ric Burns chronicles the life and work of the great 14th-century Florentine poet Dante Alighieri and explores the extraordinary power, beauty and drama of his literary masterwork, “The Divine Comedy.” Set within the riveting circumstances of the poet’s own life and in the turbulent times in which he lived, the two-part, four-hour film is the first feature-length documentary to present for an English-speaking audience the power, reach and drama of Dante’s biography, or of the soaring poetic masterpiece he created, a crown jewel of world literature and culture. The film *Dante: Inferno to Paradise* spotlights the poet’s significance and contribution to world culture: an impact that has reached across 700 years with a text that speaks as powerfully to contemporary readers today as it did to those of the writer’s own time as people everywhere continue to look for signs of hope and redemption and a way forward.



STEEPLECHASE FILMS/COURTESY PBS

## Menus-Plaisirs – Les Troisgros

Friday, March 22 at 9 p.m. on  
WETA PBS & WETA Metro;  
stream on the PBS App

Master of cinéma vérité Frederick Wiseman returns with an acclaimed new, 44th feature film, *Menus-Plaisirs – Les Troisgros*, that spans food, family and travel. The four-hour film illuminates the famed culinary artistry of the Troisgros family dynasty in the countryside of central France — and the inner workings of its three restaurants, founded 93 years ago and holding three Michelin stars for more than 55 years. Set against a backdrop of lush rolling hills, the patient observational documentary presents an intimate glimpse into the immense craftsmanship, imagination and collaboration that goes into creating and presenting meals of the highest quality and a unique and memorable culinary experience. Employing his signature long-form style, Wiseman explores the journey from sourcing ingredients and menu planning to the choreographed chaos of the kitchen and the creation of a dish.



ZIPPORAH FILMS



## American Experience: The Cancer Detectives

Tuesday, March 26 at 9 p.m. on WETA PBS & WETA Metro; stream on the PBS App

In the 1950s, survival rates from cancer of any kind were low, and cervical cancer, which was frequently asymptomatic until well advanced, was often a death sentence. From history series *American Experience*, the new program *The Cancer Detectives* chronicles the story of the fight against cervical cancer, spotlighting the team that pioneered the Pap test and saved hundreds of thousands of women from cancer. The film revolves around three characters: Dr. George Papanicolaou, a Greek immigrant who developed a diagnostic test;

Hashime Murayama, a talented Japanese-American artist (National Geographic's first in-house illustrator) who was held in a World War II internment camp and then released to work on the project; and Dr. Helen Dickens, a Black female OB-GYN and surgeon who overcame distrust between the Black community and medical professionals to save lives. The work of this trio slashed death rates of the previously unfigurable cancer by more than 60 percent.



## NOVA: A.I. Revolution

Wednesday, March 27 at 9 p.m. on WETA PBS & WETA Metro; stream on the PBS App

Can we harness the power of artificial intelligence (A.I.) to solve the world's most challenging problems without creating an uncontrollable force that ultimately could destroy humanity? A new *NOVA* program explores answers to this contemporary quandary. With the rise of ChatGPT, the world has been transfixed by the power and potential of the latest generation of A.I., with its abilities to answer complex questions, write essays, generate realistic-looking images — even pass a lawyer's bar exam — all in a matter of seconds. In the program, correspondent Miles O'Brien meets scientists using A.I. to accelerate discovery in fields from medicine to climate change — and

explores how humanity can avoid the worst potential impacts of this powerful technology.

Also airing this month is an encore presentation of the two-hour *NOVA* special *Polar Extremes* (March 20, 9 p.m.), which follows renowned paleontologist Kirk Johnson (head of the Smithsonian National Museum of Natural History) as he explores what the past can reveal about our planet's climate future.



1919 Oregon public health message

## The Invisible Shield

Tuesday, March 26 at 10 p.m. on WETA PBS & WETA Metro; stream on the PBS App

A new four-part series examines how public health has increased life spans and saved countless lives from disease, and how underfunding, disinformation, and skepticism of science and government continue to place human health at risk. *Episode 1. The Old Playbook* (March 26) explores how public health and associated initiatives have doubled life expectancy, and how the system is now in jeopardy. When the world has to cope with the COVID-19 pandemic, the public health sector revisits the past to create solutions. *Episode 2. Follow the Data* (April 9) spotlights how data collection has been an essential public health tool for centuries. Then, as of March 26, on the PBS App, stream episode *Inoculation & Inequity*, which chronicles how disinformation and distrust affected COVID vaccination efforts, and the final episode *The New Playbook*, which illuminates how experts are rethinking the public health system in the face of declining life expectancy, inequality, and deaths of despair.

## Ken Burns: *The Civil War*

**Saturday, March 9 at 7:30 p.m. on WETA PBS**

**W**ETA reprises a celebration of filmmaker and WETA production partner Ken Burns' landmark 1990 documentary series *The Civil War*, a co-production of Florentine Films and WETA. This special 2015 program, created to mark the then-25th anniversary of the series, features footage from the original film and shares the story of how the award-winning documentary came to be made and how it has become a cultural icon of American storytelling in film. Illuminating the acclaimed history production, the program presents interviews with Ken Burns, writer Geoffrey Ward, documentarian Ric Burns, cinematographer Buddy Squires and others who participated in the project. *Ken Burns: The Civil War* highlights an extraordinary achievement in filmmaking.

Also watch *Ken Burns: The National Parks* (March 10, 6:30 a.m. and 11:30 p.m.), a celebration of the 2009 film *The National Parks: America's Best Idea*, a WETA co-production created by Ken Burns and Dayton Duncan. Stream *The Civil War* and *The National Parks: America's Best Idea* with WETA Passport.



COURTESY FLORENTINE FILMS

## '70s Soul Superstars

**Tuesday, March 5 at 8 p.m. on WETA PBS;  
repeats March 8, 10:30 p.m.**

**I**n a reprised program featuring legendary artists, soul diva Patti LaBelle (right) hosts a historic reunion of classic recording stars of the 1970s, including the Commodores; original lead Eugene Record reuniting with the Chi-Lites; the Stylistics; Yvonne Elliman; Heatwave; Earl Young's Trampmps; the Emotions; and the Manhattans, all singing the top hits that helped to define the decade's soul-era sound. The program's producer, TJ Lubinsky, tracked down the original artists, coaxing Elliman, for example, out of retirement ("If I Can't Have You") to perform in public for the first time in decades for the show; bringing George ("Rock Your Baby") McCrae in from the Netherlands; and recording the Stylistics ("You Make Me Feel Brand New," "Betcha By Golly Wow") in England. Among the songs featured are "Lady Marmalade," "Disco Inferno," "Shining Star," "Ain't No Stopping Us Now," "If You Don't Know Me By Now," "Best of My Love," "Have You Seen Her," "Oh Girl," "Brick House" and "We Are Family."



T.J. LUBINSKY

## Rick Steves' Mighty Alps

**Monday, March 4 at 8 p.m. on WETA PBS**

**I**n a thrilling thin-air special, join European travel expert, popular public television host and best-selling guidebook author Rick Steves on an alpine adventure — from Italy to Austria to Switzerland to France — with picturesque train rides, breathtaking lifts, majestic glaciers and unforgettable hikes. The one-hour greatest-hits roundup of the Alps celebrates mountains and scenery, nature and culture. The program first visits the Dolomites in Italy and the Zugspitze in Austria. Then, in Switzerland, the itinerary includes more jaw-dropping mountain beauty — from the Matterhorn to the Jungfrau to Appenzel. And in France, with Chamonix as a springboard, join Steves in riding the lift up to the Aiguille du Midi and hut-hop along the iconic Tour du Mont Blanc hiking path. As the program visits the literal high points of Europe, experience alpine life, from folk music to rustic cheesemaking.

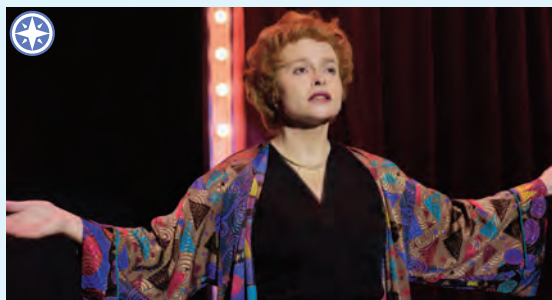


COURTESY RICK STEVES

# Stream with WETA Passport



Stream your favorite shows with WETA Passport, a member benefit that offers access to a vast library of superb programs available for streaming on demand. To learn how to access programming with WETA Passport, visit [weta.org/passporthelp](http://weta.org/passporthelp).



OLIV STREET PRODUCTIONS AND MASTERPIECE

## Nolly on Masterpiece

Helena Bonham Carter stars as beloved British TV star “Nolly” Gordon, who was famously summarily fired from her role of nearly 20 years on the soap opera *Crossroads*. Binge-watch the new 3-part drama with WETA Passport as of the March 17 broadcast premiere.



FREMANTLE

## Alice & Jack on Masterpiece

Domhnall Gleeson and Academy Award nominee Andrea Riseborough star in a contemporary love story unfolding over the course of years through many challenges. Binge-watch the new 6-part drama with WETA Passport as of the March 17 broadcast premiere.



COURTESY AMERICAN PUBLIC TELEVISION

## Doc Martin, Series 6 & 7

Enjoy more episodes of the popular drama starring Martin Clunes as a Cornwall village’s quirky doctor. As of March 1, binge-watch Series 6 and 7 with WETA Passport (Series 8-10 already available).



BBC

## War and Peace

A 2016 BBC Andrew Davies adaptation of Tolstoy’s epic Napoleonic-era novel stars Paul Dano, Lily James and James Norton, among others. Binge-watch the 6-part drama with WETA Passport as of March 1.



STEVE GRIFFITH

## Fanny: The Right to Rock

Among Women’s History Month programming, follow the story of Fanny, a groundbreaking rock group that was the first all-woman band to release an album with a major record label (in 1970); and learn about its famous fans.



COURTESY PBS/WALTER’S CHOICE

## Our Miracle Years, Series 2

In this German (English-subtitled) drama, follow the turbulent journey of family members who rebuild their lives in post-Nazi Germany. Binge-watch the 6 new episodes with WETA Passport as of March 22.

**Also streaming in March:** Binge-watch the 12-part 2011 British political thriller *The Hour* — starring Ben Whishaw, Romola Garai and Dominic West — before the series departs WETA Passport on March 31.



# Primetime

WETA PBS in March



Visit [weta.org/schedule](http://weta.org/schedule) for the most up-to-date schedule information.

  Denotes WETA productions, co-productions and presentations

|               | 8:00   | 8:30  | 9:00  | 9:30   | 10:00   | 10:30  |
|---------------|--|---|---|--|---|--|
| <b>1 Fri</b>  | Washington Week with <i>The Atlantic</i>   | Carole King & James Taylor: Just Call Out My Name |   |  | Young Forever w/ Mark Hyman, MD (to 12:30am)                                |  |
| <b>2 Sat</b>  | (from 7:30pm) Gospel (Pt 2. <i>Take the Message Everywhere/Gospel's Second Century</i> )                   |   |   |  | Bee Gees: In Our Own Time (to 12m)  |  |
| <b>3 Sun</b>  | The Big Band Years   |   |   |  | <i>Endeavour, Series 8</i> on Masterpiece (Ep 1. <i>Striker</i> ) (to 12m)  |  |
| <b>4 Mon</b>  | Rick Steves' Mighty Alps   |   | Signature Dish: <i>Food Hall Finds</i>                          | Barbra Streisand: Back to Brooklyn (to 11:30pm)                  |   |  |
| <b>5 Tue</b>  | '70s Soul Superstars   |   |   |  |   | History with David Rubenstein, Season 5      |
| <b>6 Wed</b>  | Nature: Soul of the Ocean  |   |   | Suze Orman's Ultimate Retirement Guide (to 11:30pm)              |   |  |
| <b>7 Thu</b>  | Preserving Presidential History with David Rubenstein  |   | State of the Union 2024: A <i>PBS NewsHour</i> Special Report   |  |   |  |
| <b>8 Fri</b>  | Washington Week with <i>The Atlantic</i>   | Memory Makeover with Daniel Amen, MD              |   |  |   | '70s Soul Superstars (to 1am)                |
| <b>9 Sat</b>  | (from 7:30pm) Ken Burns: <i>The Civil War</i>  |   |   | This Land Is Your Land   |   |  |
| <b>10 Sun</b> | (from 8:05pm) Doc Martin, Series 10 (Pt 9 of 9. <i>Last Christmas in Portwenn</i> )                        |   |   | (from 9:36pm) Barbra Streisand: Back to Brooklyn (to 11:36pm)    |   |  |
| <b>11 Mon</b> | Antiques Roadshow: LSU Rural Life Museum, Hour 2   |   | Signature Dish: <i>Savoring South America</i>                   | WETA Arts  | American Masters: Mae West (to 11:30pm)                                     |  |
| <b>12 Tue</b> | Finding Your Roots w/ Henry Louis Gates, Jr., Encore: <i>Things We Don't Discuss</i>                       |   | American Experience: The Sun Queen                              |  | Frontline: Lethal Restraint   |  |
| <b>13 Wed</b> | Nature: Equus: Story of the Horse – Origins  |   | NOVA: Hidden Volcano Abyss                                      |  | NOVA: Arctic Sinkholes  |  |
| <b>14 Thu</b> | <i>Endeavour, Series 8</i> on Masterpiece (Ep 2. <i>Scherzo</i> )  |   |   |  | <i>Endeavour, Series 8</i> on Masterpiece (Ep 3. <i>Terminus</i> ) (to 12m) |  |
| <b>15 Fri</b> | Washington Week with <i>The Atlantic</i>   | History with David Rubenstein, Season 5           | Great Performances at the Met: <i>Dead Man Walking</i> (to 12m) |  |   |  |
| <b>16 Sat</b> | WETA Member Favorites (visit <a href="http://weta.org/schedule">weta.org/schedule</a> for program details) |   |   |  |   |  |
| <b>17 Sun</b> | Call the Midwife, Series 13 (Pt 1 of 8)  |   | Nolly on Masterpiece (Pt 1 of 3)                                |  | <i>Alice &amp; Jack</i> on Masterpiece (Pt 1 of 6)                          |  |
| <b>18 Mon</b> | Dante: Inferno to Paradise (Pt 1 of 2. <i>The Inferno</i> )  |   |   |  | POV: Unseen (to 11:30pm)  |  |
| <b>19 Tue</b> | Dante: Inferno to Paradise (Pt 2 of 2. <i>Resurrection</i> )   |   |   |  | Rising Against Asian Hate: One Day in March                                 |  |
| <b>20 Wed</b> | Nature: Equus: Story of the Horse: Chasing the Wind  |   | NOVA: Polar Extremes  |  |   |  |
| <b>21 Thu</b> | (from 7:59pm) Agatha Christie's Poirot: Five Little Pigs (to 9:33pm)                                       |   |   | (from 9:33pm) Agatha Christie's Poirot: Sad Cypress (to 11:07pm) |   |  |
| <b>22 Fri</b> | Washington Week with <i>The Atlantic</i>   | Perspectives: Marty Baron                         | Menus-Plaisirs – Les Troisgros (to 1am)                         |  |   |  |
| <b>23 Sat</b> | American Experience: The Vote (Pts 1 & 2 of 4)   |   |   |  | Groundbreakers (to 12m)   |  |
| <b>24 Sun</b> | Call the Midwife, Series 13 (Pt 2 of 8)  |   | Nolly on Masterpiece (Pt 2 of 3)                                |  | <i>Alice &amp; Jack</i> on Masterpiece (Pt 2 of 6)                          |  |
| <b>25 Mon</b> | Antiques Roadshow: LSU Rural Life Museum, Hour 3   |   | Signature Dish: <i>Filipino Festival</i>                        | WETA Arts  | Independent Lens: Greener Pastures (to 12m)                                 |  |
| <b>26 Tue</b> | Finding Your Roots w/ Henry Louis Gates, Jr., Encore: <i>Secret Lives</i>                                  |   | American Experience: The Cancer Detectives                      |  | The Invisible Shield (Pt 1. <i>The Old Playbook</i> )                       |  |
| <b>27 Wed</b> | Nature: Remarkable Rabbits   |   | NOVA: A.I. Revolution   |  | NOVA: Star Chasers of Senegal   |  |
| <b>28 Thu</b> | (from 7:59pm) Agatha Christie's Poirot: Death on the Nile (to 9:37pm)                                      |   |   | (from 9:37pm) Agatha Christie's Poirot: The Hollow (to 11:11pm)  |   |  |
| <b>29 Fri</b> | Washington Week with <i>The Atlantic</i>   | History with David Rubenstein, Season 5           | American Masters: Daniel Patrick Moynihan                       |  |   | Antiques Roadshow Recut: Bonanzaville (Pt 2) |
| <b>30 Sat</b> | American Experience: The Vote (Pts 3 & 4 of 4)   |   |   |  | American Experience: The Cancer Detectives                                  |  |
| <b>31 Sun</b> | Call the Midwife, Series 13 (Pt 3 of 8)  |   | Nolly on Masterpiece (Pt 3 of 3)                                |  | <i>Alice &amp; Jack</i> on Masterpiece (Pt 3 of 6)                          |  |

**PBS NewsHour** airs weeknights at 7 p.m.  
**PBS News Weekend** airs Sat./Sun. at 6 p.m.

**Amanpour and Company** airs late weeknights (check listings)

# TV Listings

WETA PBS in March



Listings are accurate as of press time. For latest schedules, visit [weta.org/schedule](http://weta.org/schedule) or call 703-998-2724.

WETA PBS is devoted to children's educational programming 8 a.m.-3 p.m., Monday-Friday. For 24 hours of children's programming each day, tune in to the WETA PBS Kids channel. See page 15 for information.

## Program Key

**Blue type** – WETA productions, co-productions and presentations.

**R** – Repeat of recent programming.



COURTESY/MCGEE MEDIA

## GOSPEL A WETA CO-PRODUCTION

**Saturday, March 2, 7:30 p.m. on WETA PBS; 8 p.m. on WETA Metro**  
WETA reprises the film *Gospel*, hosted by Henry Louis Gates, Jr. Part 1 of the documentary airs on WETA Metro; Part 2 on WETA PBS. Above: Gates with singer Dionne Warwick, who appears in the film.

## 1 Friday

### WEEKDAYS IN MARCH:

**6AM NHK NEWSLINE**

**6:30AM BBC NEWS**

**7AM (Mondays:) PBS NEWS WEEKEND**

**7AM (Tuesdays-Saturdays:) PBS NEWS HOUR – R**

**7:30 (Mon:) WASHINGTON WEEK WITH THE ATLANTIC – R**

**8AM-3PM WETA KIDS PROGRAMMING**

**5PM AMANPOUR AND COMPANY** – Rpt of previous night

**6PM BBC NEWS: THE CONTEXT**

**6:30 BBC NEWS AMERICA**

**7:00 PBS NEWS HOUR** – Each weeknight, the WETA production presents in-depth news reports and analysis of current events with a news summary, live studio interviews and discussions of domestic and international issues. Amna Nawaz and Geoff Bennett anchor. Visit [pbs.org/newshour](http://pbs.org/newshour). **Rpts next day, 7am**

**8:00 WASHINGTON WEEK WITH THE ATLANTIC** – In WETA's weekly production, *The Atlantic* editor-in-chief Jeffrey Goldberg moderates a roundtable discussion with award-winning journalists who provide reporting and analysis of the major news stories from the nation's capital. Visit [pbs.org/washingtonweek](http://pbs.org/washingtonweek). **Repeats Sat 3/2, 6am, 6:30pm; Mon 3/4, 7:30am**

**8:30 CAROLE KING & JAMES TAYLOR: JUST CALL OUT MY NAME** – Learn about the two iconic musical artists in a documentary look at their decades-long careers and ongoing partnership. The program features live performances of King's classics, including *You've Got a Friend*, *Natural Woman* and *It's Too Late*, and Taylor's *Sweet Baby James*, *Fire and Rain*, *Carolina in My Mind* and many more.

**10:30 YOUNG FOREVER WITH MARK HYMAN, MD** – Learn science-based anti-aging strategies and tips from functional medicine practitioner Dr. Mark Hyman, who offers a practical guide to creating and sustaining health – for life. **Repeats Sat 3/9, 1pm, 11pm**

**12:30AM RICK STEVES: WHY WE TRAVEL** – European travel expert Rick Steves offers up a love note to exploration, celebrating the value of experiencing our world – whether as a tourist, a traveler or a pilgrim. **Repeats Thur 3/7, 4:30pm; Sun 3/10, 6am**

**1AM AMANPOUR AND COMPANY** – Capping primetime programming each weeknight, Christiane Amanpour leads conversations with global thought leaders on contemporary issues. **Repeats next weekday, 5pm**

## 2 Saturday

**6AM WASHINGTON WEEK WITH THE ATLANTIC – R**

**6:30 FIRING LINE WITH MARGARET HOOVER**

**7AM PBS NEWS HOUR – R**

**8AM SUZE ORMAN'S ULTIMATE RETIREMENT GUIDE** – See the Wednesday, March 6, 9:30 p.m. listing.

**10AM IT'S ACADEMIC** – See 7 p.m. listing.

**10:30 RICK STEVES MARATHON** – WETA presents select episodes and specials from renowned European travel expert Rick Steves. **Repeats tonight, 1am**

**3:30 '70S SOUL SUPERSTARS** – See the Tuesday, March 5, 8 p.m. listing.

**6:00 PBS NEWS WEEKEND** – John Yang anchors.

**6:30 WASHINGTON WEEK WITH THE ATLANTIC – R**

**7:00 IT'S ACADEMIC** – The long-running high school TV quiz show showcases the academic achievements of local D.C.-area students. Emmy Award-winning journalist Hillary Howard hosts. Competing this week are Justice, Langley and Potomac high schools. **Airs 10am Saturdays, repeating 7pm; and Mondays, 3pm. Stream on the PBS App and at [YouTube.com/wetapbs](http://YouTube.com/wetapbs).**

**7:30 GOSPEL** – This WETA co-production, the latest history series from Henry Louis Gates, Jr., digs deep into the origin story of Black spirituality through sermon and song. *Take the Message Everywhere/Gospel's Second Century*. Experience how gospel family dynasties dominated the music charts and how a new generation embracing secular rhythms modernized the genre, bringing songs about faith to millions and achieving platinum-selling success. **Repeats Sun 3/3, 8:30am**

**10:00 BEE GEES: IN OUR OWN TIME** – A documentary film explores the illustrious career of the pop music icons. With hits "Massachusetts", "Words", "How Deep Is Your Love", "Jive Talkin'", "Stayin' Alive", "Night Fever" and more, the Bee Gees' award-winning career spanned five decades. The Brothers Gibb sold more than 200 million albums, making them one of the best-selling music acts of all time. **Repeats Thur 3/7, 11pm; Sat 3/9, 2:30pm, 12:30am**



RUSSELL JAMES

**Monday, March 4 at 9:30 p.m. on WETA PBS**  
*Barbra Streisand: Back to Brooklyn* features the superstar in an October 2012 concert, taped in her hometown borough, that includes nine songs she had never before performed live on stage.



## WASHINGTON WEEK WITH THE ATLANTIC A WETA PRODUCTION

**Fridays at 8 p.m. on WETA PBS & WETA Metro**

*Washington Week with The Atlantic*, hosted by Jeffrey Goldberg, features reporting and analysis of the major national news stories of each week with a roundtable of today's top journalists.

- 12M 5 MINUTE YOGA FIX WITH PEGGY CAPPY** – Learn how to combat the effects of aging with stretching, breathwork and strength-building to maintain strength, flexibility, balance and mobility. **Rpts Sun 3/3, 6am; Sat 3/9, noon**
- 1AM RICK STEVES MARATHON** – R

## 3 Sunday

- 6AM 5 MINUTE YOGA FIX WITH PEGGY CAPPY** – R
- 7AM IRELAND MADE WITH LOVE** – Explore the legacy of craftsmanship through the skill, traditional techniques, pride and love that go into legendary Irish products. Spotlights are harp-making, basket- and wool-weaving, crystal engraving and more.
- 8:30 GOSPEL** – *Take the Message Everywhere/Gospel's Second Century*. R
- 11:00 THE JEWISH JOURNEY: AMERICA** – Follow Jewish immigration to the U.S. through the centuries. Top scholars, notable writers and immigrants themselves share stories of those who made a leap of faith to escape persecution or pursue opportunity.
- 12:30 THIS LAND IS YOUR LAND** – The Smothers Brothers (Tom and Dick) and musical artist Judy Collins host a journey through the evolution of modern American folk music. Featured musical acts include the Brothers Four, Glenn Yarborough, the Highwaymen, Roger McGuinn and John Sebastian. **Repeats Wed 3/6, 11:30pm; Sat 3/9, 9:30pm**
- 2:00 BARBRA STREISAND: BACK TO BROOKLYN** – See the Monday, March 4, 9:30 p.m. listing.
- 4:00 ALL CREATURES GREAT AND SMALL: TOURING THE DALES** – With the popular *Masterpiece* drama inspiring visits to England's Yorkshire Dales, this program celebrates the region's beauty and the locations that audiences have come to love. The virtual tour includes Skeldale House, Heston Grange, The Drovers Arms, and the James Herriot Museum, in addition to scenic vistas, bridges, farms, stables and country roadways. **Repeats Sat 3/9, 8am**
- 6:00 PBS NEWS WEEKEND** – John Yang anchors. **Repeats Monday, 7am**
- 6:30 HISTORY WITH DAVID RUBENSTEIN, SEASON 5** – *Episode 8 of 10. Candice Millard. Author of *Destiny of the Republic: A Tale of Madness, Medicine, and the Murder of a President**. **Repeats Tue 3/5, 10:30pm**
- 7:00 DOC MARTIN, SERIES 10** – *Part 8 of 9. Our Last Summer*. As the Ellinghams prepare to leave for London, Ruth tells Martin that she thinks his blood phobia has been misdiagnosed. She also counsels Mrs. Tishell on how to overcome her obsession with the Doc, while Penhale anxiously arranges the farewell party. When Chicken the dog escapes, Martin has a serious accident trying to catch him.
- 8:00 THE BIG BAND YEARS** – Enjoy a "Big Band" era music retrospective featuring songs by Glenn Miller, the Andrews Sisters, Benny Goodman and many more artists from the 1930s and 1940s. Peter Marshall hosts. **Repeats Fri 3/8, 3pm**

- 10:00 ENDEAVOUR, SERIES 8 ON MASTERPIECE** – In the penultimate *Endeavour* series, it is 1971, and detectives Morse and Thursday investigate cases in Oxfordshire as Morse shows signs of a struggle with his inner demons. Shaun Evans and Roger Allam star. *Episode 1. Striker*. An explosive murder at an Oxford college has potentially far-reaching political ramifications. Meanwhile, Morse is tasked with guarding the life of a beloved soccer team's star striker. The series continues March 14.
- 12M MEMORY MAKEOVER WITH DANIEL AMEN, MD** – See the Friday, March 8, 8:30 p.m. listing. **Repeats Wed 3/6, 3pm**

## 4 Monday

- 7:00 PBS NEWSHOUR** – Weeknights. Visit [pbs.org/newshour](http://pbs.org/newshour). **Repeats next day, 7am**
- 8:00 RICK STEVES' MIGHTY ALPS** – Join Rick Steves on an alpine adventure from Italy to Austria to Switzerland to France, with scenic train rides, breathtaking lifts, majestic glaciers, and unforgettable hikes. In this greatest-hits trip around the Alps, Steves celebrates nature, culture and alpine life.
- 9:00 SIGNATURE DISH, SEASON 2** – WETA's local series spotlights standout dishes at restaurants around the national capital area. *Episode 9. Food Hall Finds*. Host Seth Tillman visits local food halls, where diners can find dishes to satisfy any palate. He samples *chicken and beef sausage gumbo* at Puddin' in D.C.'s Union Market; the *vegan banh mi zizzit sandwich* at Mush in the miXt Food Hall in Brentwood, Maryland; and Brasa's handmade *butifarra sausage* at The Square in downtown D.C.
- 9:30 BARBRA STREISAND: BACK TO BROOKLYN** – In a 2012 concert, the iconic musical artist makes a homecoming to Brooklyn at the Barclays Center arena, marking the superstar's first Brooklyn performance since her childhood years. Joined by special guests Il Volo and Chris Botti, Streisand delivers an extensive selection of songs from throughout her five-decade career, including a duet with her son, Jason Gould. **Repeats Tue 3/5, 3pm; Sun 3/10, 9:36pm**
- 11:30 ITALY MADE WITH LOVE: GENERATIONS** – In this Emmy-nominated program, explore the passion and pride of Italian artisans, from hatmakers in Tuscany to truffle hunters in Umbrian forests to pasta chefs in Bologna. Stewards of tradition, they pass down their finely honed skills from one generation to the next.

## 5 Tuesday

- 8:00 '70S SOUL SUPERSTARS** – In this reprised special, join host Patti LaBelle for an all-star reunion of the legends of 1970s Motown, R&B and Soul, including the Commodores; original lead Eugene Record reuniting with the Chi-Lites; the Stylistics; Yvonne Elliman; Heatwave; the Trammps; and the Emotions. **Repeats Fri 3/8, 10:30pm**
- 10:30 HISTORY WITH DAVID RUBENSTEIN, SEASON 5** – *Episode 8 of 10. Candice Millard. Author of *Destiny of the Republic: A Tale of Madness, Medicine, and the Murder of a President**. R



HOWARD HALL

**Wednesday, March 6 at 8 p.m. on WETA PBS**

*Nature: Soul of the Ocean* spotlights the complex ocean world, offering a look at how life underwater often co-exists in a marriage of necessity. Above: A turtle being cleaned by surgeonfish.



COURTESY AMERICAN PUBLIC TELEVISION

**Sunday, March 10, 10 a.m.-6 p.m., and 7 p.m. on WETA PBS**  
*A Doc Martin, Series 10 Marathon* presents 8 episodes on March 10, leading up to the drama's final episode at 7 p.m., when Martin Clunes and Caroline Catz wrap up their roles as the Ellinghams of Portwenn.

## 6 Wednesday

- 8:00 NATURE: SOUL OF THE OCEAN** – Experience the complex world of ocean waters: *Nature* offers a look at how life underwater often co-exists in a marriage of necessity. **Repeats Thur 3/7, 3pm; Sat 3/9, 10:30am**
- 9:30 SUZE ORMAN'S ULTIMATE RETIREMENT GUIDE** – Join the acclaimed personal finance expert for essential advice on planning for and thriving in retirement. With empathy, straight talk and humor, Orman provides information about key actions. Topics include when to retire, how to save and invest for retirement, Social Security strategy, long-term care insurance, and more.
- 11:30 THIS LAND IS YOUR LAND – R**

## 7 Thursday

- 8:00 PRESERVING PRESIDENTIAL HISTORY WITH DAVID RUBENSTEIN** – The White House Historical Association hosted a special 2023 program as part of its biennial Presidential Sites Summit at the Library of Congress. At the event, author/interviewer David Rubenstein moderated an anecdote-filled conversation with the leaders of the Smithsonian Institution, Library of Congress, National Park Service, and National Archives and Records Administration – spotlighting the organizations' roles in preserving and sharing presidential history.
- 9:00 STATE OF THE UNION 2024: A PBS NEWSHOUR SPECIAL REPORT** – *PBS NewsHour* presents live coverage of President Biden's State of the Union address, followed by the Republican response, with reporting and analysis by the *NewsHour* team and guests. The special coverage, with co-anchors Amna Nawaz and Geoff Bennett, will include reporting from Capitol Hill correspondent Lisa Desjardins and White House correspondent Laura Barrón-López.
- 11:00 BEE GEES: IN OUR OWN TIME – R**

## 8 Friday

- 8:00 WASHINGTON WEEK WITH THE ATLANTIC** – Jeffrey Goldberg moderates the roundtable discussion of the news with award-winning journalists. Visit [pbs.org/washingtonweek](https://pbs.org/washingtonweek). **Repeats Sat 3/9, 6am, 6:30pm; Mon 3/11, 7:30am**
- 8:30 MEMORY MAKEOVER WITH DANIEL AMEN, MD** – Psychiatrist, neuroscientist and *New York Times* bestselling author Dr. Daniel Amen explains how to supercharge memory and remember what matters most to you. The process of strengthening memory is based on overcoming risk factors that destroy the brain's capacities.
- 10:30 '70S SOUL SUPERSTARS – R**

## 9 Saturday

- 6AM WASHINGTON WEEK WITH THE ATLANTIC – R**
- 6:30 FIRING LINE WITH MARGARET HOOVER**
- 7AM PBS NEWSHOUR – R**
- 8AM ALL CREATURES GREAT AND SMALL: TOURING THE DALES – R**

- 10AM IT'S ACADEMIC** – See 7 p.m. listing.
- 10:30 NATURE: SOUL OF THE OCEAN – R**
- 12N 5 MINUTE YOGA FIX WITH PEGGY CAPPY – R**
- 1:00 YOUNG FOREVER WITH MARK HYMAN, MD – R**
- 2:30 BEE GEES: IN OUR OWN TIME – R**
- 4:30 ARMENIA, MYHOME** – Experience spectacular aerial and ground views and cultural revelations of a country like no other in a virtual tour of Mount Ararat, Khor Virap, Yerevan, the Genocide memorial and more.
- 6:00 PBS NEWS WEEKEND** – John Yang anchors.
- 6:30 WASHINGTON WEEK WITH THE ATLANTIC – R**
- 7:00 IT'S ACADEMIC** – The long-running high school TV quiz show showcases the academic achievements of local D.C.-area students. Competing this week are Bishop O'Connell, Osbourn and South Lakes high schools. **Airs 10am Saturdays, repeating 7pm; and Mondays, 3pm. Stream on the PBS App and at [YouTube.com/wetapbs](https://www.youtube.com/wetapbs).**
- 7:30 KEN BURNS: THE CIVIL WAR** – An overview of the 1990 history documentary *The Civil War*, a co-production of Florentine Films and WETA, celebrates the landmark series. The special features video clips and interviews with filmmaker Ken Burns, writer Geoffrey Ward, documentarian Ric Burns, cinematographer Buddy Squires and others.
- 9:30 THIS LAND IS YOUR LAND – R**
- 11:00 YOUNG FOREVER WITH MARK HYMAN, MD – R**
- 12:30AM BEE GEES: IN OUR OWN TIME – R**

## 10 Sunday

- 6AM RICK STEVES: WHY WE TRAVEL – R**
- 6:30 KEN BURNS: THE NATIONAL PARKS** – Explore the beauty and grandeur of America's magnificent parklands, from Acadia to Yosemite, Yellowstone to the Grand Canyon. Filmmakers Ken Burns and Dayton Duncan reveal fascinating behind-the-scenes stories about the making of their series *The National Parks: America's Best Idea*, a 2009 co-production of Florentine Films and WETA. **Repeats tonight, 11:36pm**
- 8:30 ENGLAND MADE WITH LOVE** – Explore artisan craftsmanship and hidden treasures in one of the world's most picturesque countries. Meet the skilled watchmakers, weavers, bookbinders and roof thatchers who teach hands-on skills to the next generation of apprentices.
- 10AM-6PM DOC MARTIN, SERIES 10 MARATHON** – WETA reprises the first eight episodes of the popular drama's final season – leading up to the series finale tonight at 7 p.m. What will become of the Doc and his family and their friends in Portwenn?
- 6:00 PBS NEWS WEEKEND** – John Yang anchors. **Repeats Monday, 7am**
- 6:30 HISTORY WITH DAVID RUBENSTEIN, SEASON 5** – *Episode 9 of 10. Fredrik Logevall.* See the Friday, March 15, 8:30 p.m. listing.
- 7:00 DOC MARTIN, SERIES 10 – Part 9 of 9. Last Christmas in Portwenn.** Portwenn is full of festive cheer – until Martin tells Leonard that he needs to stop playing Santa while he awaits medical test results. Leonard decides to show "Doc the Grinch" the magic of Christmas, with unintended consequences. Louisa works to arrange a



ALAMY STOCK PHOTO: (M) NO ANGEL, 1933

**Monday, March 11, 10 p.m. on WETA PBS; 9 p.m. on WETA Metro**  
*American Masters: Mae West* examines the life and legacy of the notorious entertainment icon – writer, performer, and subversive star – who "climbed the ladder of success wrong by wrong."



**8-11 p.m. Sundays starting March 17 on WETA PBS & WETA Metro**  
Sunday-night drama presentations starting March 17 include a new season of *Call the Midwife* (above) and new *Masterpiece* series *Nolly* and *Alice & Jack*. See page 2 for March drama program details.

Christmas parade through Portwenn. After a mishap, Martin confronts some of his fears and tries to embrace the holiday spirit.

- 8:05 DOC MARTIN, SERIES 10** – (Encore) *Part 9 of 9. Last Christmas in Portwenn. R*  
**9:36 BARBRA STREISAND: BACK TO BROOKLYN** – R  
**11:36 KEN BURNS: THE NATIONAL PARKS** – R

## 11 Monday

- 7:00 PBS NEWSHOUR** – Weeknights. Visit [pbs.org/newshour](http://pbs.org/newshour). **Repeats next day, 7am**  
**8:00 ANTIQUES ROADSHOW: LSU RURAL LIFE MUSEUM, HOUR 2** – Head to Louisiana's capital for finds that include a 1995 Muhammad Ali-signed tablecloth; a Panerai Radiomir watch with Rolex movement; and a Frederick Douglass letter & Free Will Baptist Church archive. One is worth up to \$110,000. **Repeats Mon 3/18, 4pm**  
**9:00 SIGNATURE DISH, SEASON 2** – WETA's local series spotlights standout dishes at restaurants around the national capital area. **Episode 10. Savoring South America.** Host Seth Tillman explores South American dishes at restaurants in Maryland and Virginia. He samples Fire Pit BBQ's *picanha steak*, Inca Social's *nikkei ceviche* and, at Kantutas, the *silpancho*. **Repeats Tue 3/12, 4pm**  
**9:30 WETA ARTS** – The Emmy Award-winning arts and culture series this month features an inside look at the reopening of the National Museum of Women in the Arts, located in D.C. Also, meet Virginia-based Seán Heely, a Celtic fiddler who performs an intimate concert at the MacMillan Whisky Room in Fairfax, Virginia, and Amy Bormet, the founder of Washington Women in Jazz. **Repeats Tue 3/12, 4:30pm; Mon 3/25, 9:30pm**  
**10:00 AMERICAN MASTERS: MAE WEST** – Dive into the life and career of groundbreaking writer, performer and subversive star Mae West. Over a career spanning eight decades, she broke boundaries and gained creative and economic powers unheard of for a female entertainer in the 1930s. (90 min.)

## 12 Tuesday

- 8:00 FINDING YOUR ROOTS WITH HENRY LOUIS GATES, JR.** – In this WETA co-production, join Harvard scholar Henry Louis Gates, Jr., as he delves into the genealogy of famous Americans. **Encore Episode: Things We Don't Discuss.** Gates works with Pamela Adlon and Kathryn Hahn, two guests whose family trees were obscured by scandals, to discover the truth about their ancestors. **Repeats Wed 3/13, 4pm**  
**9:00 AMERICAN EXPERIENCE: THE SUN QUEEN** – Learn about inventor Mária Telkes, who spent nearly 50 years exploring how to harness the sun's power. Battling sexism at MIT, she persevered to design the first successfully solar-heated house in 1948 and held more than 20 patents. **Repeats Fri 3/15, 4pm**  
**10:00 FRONTLINE: LETHAL RESTRAINT** – *Frontline* investigates deaths after police use tactics such as prone restraint and other "less lethal" force. With *The Associated Press*, *Frontline* draws on police records, autopsy reports and body-cam footage to present the most expansive tally of such deaths nationwide.

## 13 Wednesday

- 8:00 NATURE: EQUUS: THE STORY OF THE HORSE** – Anthropologist Niobe Thompson uncovers the history of mankind's relationship with the horse. *Part 1 of 2. Origins.* Explore the evolutionary journey of the horse, from its tiny forest-dwelling ancestor called the Dawn Horse to the modern steed. Meet scientists unlocking the genetic basis of horsepower and decoding the animals' emotional intelligence.  
**9:00 NOVA: HIDDEN VOLCANO ABYSS** – In January 2022, one of the most powerful volcanic eruptions in recorded history rocked the islands of Tonga. Join scientists as they investigate what caused the blast, how it spurred a devastating tsunami, and whether or not another eruption could be imminent. **Repeats Thur 3/14, 4pm**  
**10:00 NOVA: ARCTIC SINKHOLES** – Scientists investigate colossal explosions in Siberia and other evidence that rapidly melting soil in the Arctic is releasing vast amounts of methane, a potent greenhouse gas. What are the implications for our climate future?

## 14 Thursday

- 8:00 ENDEAVOUR, SERIES 8 ON MASTERPIECE** – Shaun Evans and Roger Allam star. *Episode 2 of 3. Scherzo.* On the outskirts of Oxford, a cab driver is found murdered in his taxi. The investigation into his death leads Morse and the team down a surprising path. Endeavour receives a guest who reminds him of a past he'd sooner forget.  
**10:00 ENDEAVOUR, SERIES 8 ON MASTERPIECE** – *Episode 3 of 3. Terminus.* In the cold of winter, the team is called to investigate the violent killing of an Oxford college don. Thursday receives news that creates tension at home.

## 15 Friday

- 8:00 WASHINGTON WEEK WITH THE ATLANTIC** – Jeffrey Goldberg moderates the roundtable discussion of the news with award-winning journalists. Visit [pbs.org/washingtonweek](http://pbs.org/washingtonweek). **Repeats Sat 3/16, 6am, 6:30pm; Mon 3/18, 7:30am**  
**8:30 HISTORY WITH DAVID RUBENSTEIN, SEASON 5** – In this WETA presentation, Washington, D.C.-based author/interviewer, financier and philanthropist David Rubenstein talks with America's top scholars and writers, illuminating how history is made. *Episode 9 of 10. Fredrik Logevall.* Author of *JFK and the Promise of Democracy*.  
**9:00 GREAT PERFORMANCES AT THE MET: DEAD MAN WALKING** – See Ivo van Hove's production of composer Jake Heggie's opera in its Met premiere. Featuring a Terrence McNally libretto, the production stars Joyce DiDonato as Sister Helen based on the real-life memoir about her fight for a condemned killer's soul. (3 hrs.)

## 16 Saturday

- 6AM WASHINGTON WEEK WITH THE ATLANTIC** – R  
**6:30 FIRING LINE WITH MARGARET HOOVER**



**Friday, March 15 at 9 p.m. on WETA PBS & WETA Metro**  
*Great Performances at the Met: Dead Man Walking* stars Joyce DiDonato as Sister Helen Prejean and Ryan McKinny as a condemned murderer in the Metropolitan Opera premiere of composer Jake Heggie's opera.

**7AM PBS NEWSHOUR – R**  
**8AM-10AM WETA MEMBER FAVORITES**  
**10AM IT'S ACADEMIC** – See 7 p.m. listing.  
**10:30-6PM WETA MEMBER FAVORITES**  
**6:00 PBS NEWS WEEKEND** – John Yang anchors.  
**6:30 WASHINGTON WEEK WITH THE ATLANTIC – R**  
**7:00 IT'S ACADEMIC** – The long-running high school TV quiz show showcases the academic achievements of local D.C.-area students. Competing this week are Landon, St. Stephen's/St. Agnes, and Stonebridge high schools. **Airs 10am Saturdays, repeating 7pm; and Mondays, 3pm. Stream on the PBS App and at [YouTube.com/wetapbs](https://www.youtube.com/wetapbs).**  
**7:30PM-6AM WETA MEMBER FAVORITES**

## 17 Sunday

**6AM-6PM WETA MEMBER FAVORITES**  
**6:00 PBS NEWS WEEKEND** – John Yang anchors. **Repeats Monday, 7am**  
**6:30-8PM WETA MEMBER FAVORITES**  
**8:00 CALL THE MIDWIFE, SERIES 13** – The midwifery/nursing drama explores more complex medical and personal situations. It is now 1969, and East End London's Poplar community nurse-midwives are coping with the popularity of home births. *Part 1 of 8.* Nonnatus House kicks off a new pupil midwife training. Dr. Turner supervises the delivery of a baby whose mother has cerebral palsy. The "Raise the Roof Campaign" for better pay and conditions creates a division of opinion among the nurses.  
**9:00 NOLLY ON MASTERPIECE** – A drama explores the reign and fall of soap opera star Noele "Nolly" Gordon, one of the most famous faces on British TV in the 1960s and 1970s. Helena Bonham Carter stars. *Part 1 of 3.* At the height of her fame, Nolly Gordon is suddenly fired from her hit series *Crossroads* without warning – but why?  
**10:00 ALICE & JACK ON MASTERPIECE** – In this love story, when Alice and Jack first meet, they're bound by a connection so powerful it seems nothing can break it, but will life get in the way? Andrea Riseborough and Domhnall Gleeson star. *Part 1 of 6.* When Alice and Jack meet, they instantly connect. But a deep trauma from Alice's past causes her to reject Jack, who finds solace in other, less profound relationships.  
**11:00 AMERICAN EXPERIENCE: SANDRA DAY O'CONNOR: THE FIRST** – Discover the story of the U.S. Supreme Court's first female justice. A pioneer who both reflected and shaped an era, she was the deciding vote in cases on some of the 20th century's most controversial issues, including race, gender and reproductive rights. (2 hrs.)

## 18 Monday

**7:00 PBS NEWSHOUR** – Weeknights. Visit [pbs.org/newshour](https://www.pbs.org/newshour). **Repeats next day, 7am**  
**8:00 DANTE: INFERNO TO PARADISE** – A landmark documentary by filmmaker Ric Burns explores the life and times of Dante Alighieri (1265-1321) and his soaring masterpiece "The Divine Comedy" – one of the greatest achievements in the history of literature. *Part 1 of 2. The Inferno.* **Repeats Tue 3/19, 3pm; Sat 2/23, midnight**



**Thursdays, March 21 & 28 at 7:59 p.m. on WETA PBS**  
*Agatha Christie's Poirot* stars David Suchet in his signature role as the author's Belgian super-sleuth in double features on WETA Thriller Thursdays that include the famous case *Death on the Nile*.



COURTESY NOVA/GBH

**Wednesday, March 20 at 9 p.m. on WETA PBS & WETA Metro**  
**NOVA special *Polar Extremes* uncovers the bizarre natural history of the poles, following a trail of fossils to look back in time from miles-thick ice sheets to warm polar forests teeming with life.**

**10:00 POV: UNSEEN** – In this documentary, as a blind, undocumented immigrant, Pedro faces obstacles to obtain his college degree, become a social worker, and support his family. Uncertainty looms over him even after he graduates. Through experimental cinematography and sound, the film reimagines the accessibility of cinema, while exploring the intersections of immigration, disability and mental health. (90 min.)

## 19 Tuesday

**8:00 DANTE: INFERNO TO PARADISE** – A landmark documentary by filmmaker Ric Burns explores the life and times of Dante Alighieri (1265-1321) and his masterpiece "The Divine Comedy." *Part 2 of 2. Resurrection.* **Repeats Wed 3/20, 3pm; Sat 2/23, 2am**  
**10:00 RISING AGAINST ASIAN HATE: ONE DAY IN MARCH** – Explore the fight against Asian American hate following the March 2021 mass shootings at three spas in Atlanta, Georgia. Examine how this critical moment of racial reckoning sheds light on the struggles, triumphs and achievements of Asian American Pacific Islander communities.

## 20 Wednesday

**8:00 NATURE: EQUUS: THE STORY OF THE HORSE – Part 2 of 2. *Chasing the Wind.*** Discover how humans have partnered with the horse throughout the centuries, creating more than 350 breeds, from the Yakutian Horse to the Arab Horse, found all around the world. **Repeats Sun 3/24, noon**  
**9:00 NOVA: POLAR EXTREMES** – Join renowned paleontologist Kirk Johnson, Sant Director of the Smithsonian National Museum of Natural History, on an epic adventure through time at the polar extremes of our planet. Johnson uses Earth's history, written in stone, to decode what is going on at our polar extremes today, and what the future may hold. **Repeats Thur 3/21, 3pm; Sun 3/24, 1pm**

## 21 Thursday

**7:59 AGATHA CHRISTIE'S POIROT: FIVE LITTLE PIGS** – David Suchet stars as famed crime writer Agatha Christie's fictional Belgian super-sleuth Hercule Poirot. In *Five Little Pigs*, Poirot must probe anew a notorious 14-year-old murder case. Caroline Crane (Rachael Stirling) was hanged for the murder of her flamboyant artist husband in an apparent crime of passion after he flaunted yet another extramarital affair. Their daughter persuades Poirot to re-examine the case and review its evidence. Toby Stephens, Gemma Jones and Marc Warren co-star.  
**9:33 AGATHA CHRISTIE'S POIROT: SAD CYPRESS** – As Hercule Poirot (David Suchet) watches a judge sentence socialite Elinor Carlisle to death for poisoning both her aunt and her rival in love, he can't help feeling that something is amiss. He races against time to investigate the case in hopes that he can save her life. Diana Quick, Kelly Reilly, Paul McGann and Rupert Penry-Jones co-star.

## 22 Friday

- 8:00 WASHINGTON WEEK WITH *THE ATLANTIC*** – Jeffrey Goldberg moderates the roundtable discussion of the news with award-winning journalists. Visit [pbs.org/washingtonweek](http://pbs.org/washingtonweek). **Repeats Sat 3/23, 6am, 6:30pm; Sun 3/24, 11:30am; Mon 3/25, 7:30am**
- 8:30 PERSPECTIVES: MARTY BARON** – Tampa Bay broadcaster Rob Lorei interviews Marty Baron, former executive editor of *The Washington Post*. Baron shares insights and personal stories, along with captivating nuggets from his new book *Collision of Power: Trump, Bezos, and the Washington Post*. The discussion includes a wide-ranging conversation on media and democracy.
- 9:00 MENUS-PLAISIRS – LES TROISGROS** – In his trademark *vérité* style, acclaimed filmmaker Frederick Wiseman explores the lives and famed culinary artistry of the Troisgros family in the French countryside, spotlighting their work, from sourcing ingredients and menu planning to the organized chaos of the kitchen, to the ingenuity and creation of a dish. (4 hrs.)

## 23 Saturday

- 6AM WASHINGTON WEEK WITH *THE ATLANTIC*** – R
- 6:30 FIRING LINE WITH MARGARET HOOVER**
- 7AM PBS NEWSHOUR** – R
- 8AM JOURNEYS IN JAPAN**
- 8:30 LEGACY LIST WITH MATT PAXTON**
- 9AM THIS OLD HOUSE + ASK THIS OLD HOUSE**
- 10AM IT'S ACADEMIC** – See 7 p.m. listing.
- 10:30 MOTORWEEK**
- 11AM AMERICA'S TEST KITCHEN FROM *COOK'S ILLUSTRATED***
- 11:30 NEW ORLEANS COOKING WITH KEVIN BELTON**
- 12N SIGNATURE DISH, SEASON 1**
- 12:30 CHRISTOPHER KIMBALL'S MILK STREET TELEVISION**
- 1:00 MY GREEK TABLE WITH DIANE KOCHILAS**
- 1:30 LIDIA'S KITCHEN**
- 2:00 JACQUES PÉPIN: HEART AND SOUL**
- 2:30 SARA'S WEEKNIGHT MEALS**
- 3:00 MOVEABLE FEAST WITH RELISH**
- 3:30 NEW SCANDINAVIAN COOKING**
- 4:00 COOK'S COUNTRY FROM AMERICA'S TEST KITCHEN**
- 4:30 AMERICA'S TEST KITCHEN FROM *COOK'S ILLUSTRATED***
- 5:00 PATI'S MEXICAN TABLE**
- 5:30 SAMANTHA BROWN'S PLACES TO LOVE**
- 6:00 PBS NEWS WEEKEND** – John Yang anchors.
- 6:30 WASHINGTON WEEK WITH *THE ATLANTIC*** – R
- 7:00 IT'S ACADEMIC** – The long-running high school TV quiz show showcases the academic achievements of local D.C.-area students. Competing this week are Edison, Washington International and Washington-Liberty high schools. **Airs 10am Saturdays, repeating 7pm; and Mondays, 3pm. Stream on the PBS App and at [YouTube.com/wetapbs](http://YouTube.com/wetapbs).**
- 7:30 VARIETY STUDIO: ACTORS ON ACTORS, SERIES 19** – A series features conversations between contemporary star actors. *Episode 3*. Michael Fassbender with Carey Mulligan; Greta Lee with Andrew Scott; and Halle Bailey with Rachel Zegler.
- 8:00 AMERICAN EXPERIENCE: THE VOTE** – Meet the unsung heroes of the women's suffrage movement and relive the campaign that led to passage of the 19th Amendment, granting American women the vote and ushering



COURTESY:TVS

**Monday, March 25 at 10 p.m. on WETA PBS**

*Independent Lens: Greener Pastures* follows people contending with economic uncertainty and the healthcare crisis in rural America, where mental health concerns and isolation are impacting communities.

in the largest expansion of voting rights in U.S. history. *Part 1 of 4*. Learn about the first generation of leaders in the decades-long battle to win the vote for women. In the 19th century, a time women had few legal rights, Susan B. Anthony and Elizabeth Cady Stanton galvanized thousands to demand equal citizenship. **Repeats Sun 3/24, 4pm, 11pm**

- 9:00 AMERICAN EXPERIENCE: THE VOTE** – *Part 2 of 4*. Explore the strategies used by a new generation of leaders determined to win the vote for women. Debates over radical tactics and the place of African American women in the movement shaped the battle in the crucial period 1906-1915. **Repeats Sun 3/24, 5pm, midnight**
- 10:00 GROUNDBREAKERS** – Billie Jean King and other female sports icons discuss how Title IX and their own achievements changed the course of women's sports. Featured are Nancy Lieberman, Chloe Kim, Naomi Osaka, Jackie Joyner-Kersey, Julie Foudy, Diana Flores and Suni Lee.
- 12M-4AM DANTE: INFERNO TO PARADISE** – *Parts 1 & 2 of 2*. R

## 24 Sunday

- 6AM-9AM WETA KIDS PROGRAMMING**
- 9AM WHITE HOUSE CHRONICLE**
- 9:30 TO THE CONTRARY WITH BONNIE ERBE**
- 10AM THIS IS AMERICA AND THE WORLD WITH DENNIS WHOLEY**
- 10:30 MOTORWEEK**
- 11:00 FIRING LINE WITH MARGARET HOOVER**
- 11:30 WASHINGTON WEEK WITH *THE ATLANTIC*** – R
- 12N NATURE: EQUUS: THE STORY OF THE HORSE** – *Part 2*. R
- 1:00 NOVA: POLAR EXTREMES** – R
- 3:00 SECRETS OF THE DEAD: LADY SAPIENS** – Incredible scientific investigations around the globe are helping to piece together the untold story of prehistoric women. The latest research separates fact from fiction and sheds new light on our ancient foremothers.
- 4:00 AMERICAN EXPERIENCE: THE VOTE** – *Parts 1 & 2 of 4*. R
- 6:00 PBS NEWS WEEKEND** – John Yang anchors. **Repeats Monday, 7am**
- 6:30 HISTORY WITH DAVID RUBENSTEIN, SEASON 5** – *Episode 10 of 10*. Jeffrey Frank. Author of *The Trials of Harry S. Truman: The Extraordinary Presidency of an Ordinary Man*. **Repeats Fri 3/29, 8:30pm**
- 7:00 LUCY WORSLEY'S ROYAL MYTHS AND SECRETS: ELIZABETH I: WARRIOR QUEEN** – Join historian and presenter Lucy Worsley for an exploration of how Elizabeth I's image as a warrior queen, created by a series of myths and secrets about her victory over the Spanish Armada, shaped British national identity for centuries.
- 8:00 CALL THE MIDWIFE, SERIES 13** – *Part 2 of 8*. Shelagh and Joyce assist a heavily pregnant woman dealing with a severe mold infestation in her new flat. Nancy attends a "Raise the Roof Campaign" meeting against some of her peers' wishes. Trixie takes secret driving lessons from Fred.
- 9:00 NOLLY ON MASTERPIECE** – *Part 2 of 3*. Nolly's last day on *Crossroads* is approaching, and she is desperate to know what will happen to her character, but her farewell is so shocking that nobody could have predicted it.
- 10:00 ALICE & JACK ON MASTERPIECE** – *Part 2 of 6*. Jack is now happily married to Lynn with a baby when an unexpected call from Alice turns his life upside down. Torn by his feelings for Alice, Jack decides to see her in secret – with devastating consequences.
- 11:00 AMERICAN EXPERIENCE: THE VOTE** – *Parts 1 & 2 of 4*. R



COURTESY:BYRN MAWR

**8 p.m. March 23 & 30, WETA PBS; March 21 & 28, WETA Metro**  
Four-part *American Experience* program *The Vote* spotlights unsung heroes of the women's suffrage movement and recounts the campaign that led to the 19th Amendment, granting American women the vote.

## 25 Monday

- 7:00 PBS NEWSHOUR** – Weeknights. Visit [pbs.org/newshour](https://pbs.org/newshour). **Repeats next day, 7am**
- 8:00 ANTIQUES ROADSHOW: LSU RURAL LIFE MUSEUM, HOUR 3** – *Roadshow* visits Louisiana for fascinating finds, like 1997 Michael Jordan–signed Air Jordan XII shoes; a Patek Philippe gold wristwatch, ca. 1915; and a diamond & platinum ring, ca. 2000. Guess which item is valued at more than \$100,000.
- 9:00 SIGNATURE DISH, SEASON 2** – WETA's local series spotlights standout dishes at restaurants around the national capital area. **Episode 11. Filipino Festival.** Host Seth Tillman visits three Filipino restaurants in D.C. and VA, tasting *adobo duck confit* at Hiraya; an *ube breakfast burger* at Egg Karne; and fish dish *bangus sisig* at F&F Filipino Fusion. **Repeats Tue 3/26, 4pm**
- 9:30 WETA ARTS** – See the Monday, March 11, 9:30 p.m. listing. **Repeats Tue 3/26, 4:30pm**
- 10:00 INDEPENDENT LENS: GREENER PASTURES** – A documentary film follows people contending with economic uncertainty and the healthcare crisis in rural America. Learn about the mental health and isolation of Midwestern farmers and the Appalachian communities left with limited – or no – access to healthcare. (2 hrs.)

## 26 Tuesday

- 8:00 FINDING YOUR ROOTS WITH HENRY LOUIS GATES, JR.** – In this WETA co-production, join Harvard scholar Henry Louis Gates, Jr., as he delves into the genealogy of famous Americans. **Encore Episode: Secret Lives.** Gates uses DNA to help comedians Carol Burnett and Niecy Nash solve deep family mysteries. **Repeats Wed 3/27, 4pm; Sat 3/30, midnight**
- 9:00 AMERICAN EXPERIENCE: THE CANCER DETECTIVES** – Discover the story of the fight against cervical cancer and the three fascinating figures – a Greek immigrant doctor, a Japanese-American illustrator, and a Black woman surgeon – whose work slashed death rates from the disease by more than 60 percent. **Repeats Sat 3/30, 10pm; Sun 3/31, 3pm**
- 10:00 THE INVISIBLE SHIELD** – Explore how public health has increased life spans and saved countless lives from disease – and how underfunding, disinformation, and skepticism of science and government place human health at risk. **Part 1. The Old Playbook.** Public health has doubled life expectancy, but the system is now in jeopardy. When the world has to cope with the COVID-19 pandemic, the public health sector revisits the past to create solutions.



**Sundays, March 24 & 31 at 7 p.m. on WETA PBS**

*Lucy Worsley's Royal Myths & Secrets* features the historian (above) exploring the lives and legacies of historical monarchs in episodes spotlighting queens Elizabeth I (March 24) and Anne (March 31).



**Wednesday, March 27 at 8 p.m. on WETA PBS & WETA Metro**

Revised *Nature* episode *Remarkable Rabbits* illuminates the many species of rabbits and hares, from snowshoe hares to Flemish giants.

## 27 Wednesday

- 8:00 NATURE: REMARKABLE RABBITS** – There are more than 100 domestic and wild kinds of rabbits and hares, from snowshoe hares to Flemish giants. Despite their remarkable ability to reproduce, many wild rabbits are in danger of being eradicated. **Repeats Sat 3/30, 1am; Sun 3/31, noon**
- 9:00 NOVA: A.I. REVOLUTION** – Explore the promise, perils and possible future of new A.I. technologies taking the world by storm. Tools like ChatGPT seem to think, speak and create like humans. But what are they really doing? From cancer cures to *Terminator*-style takeovers, leading experts explore what A.I. can – and can't – do, and what lies ahead. **Repeats Sat 3/30, 2am; Sun 3/31, 1pm**
- 10:00 NOVA: STAR CHASERS OF SENEGAL** – A visionary astronomer in West Africa attempts a high-stakes observation of a distant asteroid vital to a NASA mission. From prehistoric ruins to Islamic skywatchers, explore the heritage and future of African astronomy. **Repeats Sat 3/30, 3am; Sun 3/31, 2pm**

## 28 Thursday

- 7:59 AGATHA CHRISTIE'S POIROT: DEATH ON THE NILE** – A mystery adapted from Agatha Christie's crime thriller is set on board a Nile cruise on which a heartbroken woman is stalking her former fiancé and his new heiress wife. When someone is murdered, Poirot (David Suchet) must sort out alibis; and tensions rise as the body count increases. Judy Parfitt, James Fox and Barbara Flynn co-star.
- 9:37 AGATHA CHRISTIE'S POIROT: THE HOLLOW** – Fascinated by the strange behavior and relationships of the Angkatell family, Poirot (David Suchet) takes the chance to spend a weekend at their country home. Events take a sinister turn when the family stages a murder game and the "victim" is really killed. Edward Fox and Sarah Miles co-star.

## 29 Friday

- 8:00 WASHINGTON WEEK WITH THE ATLANTIC** – Jeffrey Goldberg moderates the roundtable discussion of the news with award-winning journalists. Visit [pbs.org/washingtonweek](https://pbs.org/washingtonweek). **Repeats Sat 3/30, 6am, 6:30pm; Sun 3/31, 11:30am; Mon 4/1, 7:30am**
- 8:30 HISTORY WITH DAVID RUBENSTEIN, SEASON 5** – **Episode 10 of 10. Jeffrey Frank.** Author of *The Trials of Harry S. Truman: The Extraordinary Presidency of an Ordinary Man*.
- 9:00 AMERICAN MASTERS: DANIEL PATRICK MOYNIHAN** – Learn about the life and work of former U.S. Senator and diplomat Daniel Patrick Moynihan. Considered to have one of the broadest public careers in U.S. political

*WETA Magazine* is published monthly by the Greater Washington Educational Telecommunications Association for its members. Three dollars of each member's dues are designated for its subscription. WETA occasionally exchanges member names with other organizations. If you wish that your name not be exchanged, please call Audience Services at 703-998-2724. ©2024 by Greater Washington Educational Telecommunications Association. All rights reserved. No part of this magazine may be reproduced in any form without written permission. Periodical postage paid at Arlington, VA 22210 and additional offices. Send address changes to WETA, 3939 Campbell Avenue, Arlington, Virginia 22206. Volume 37, Number 3. ISSN No. 1041-2700.

PRINTED ON RECYCLED PAPER



Publisher Mary Stewart  
Editor Jeff Giese  
Design MANIFEST LLC

Editorial and Advertising Offices  
3939 Campbell Ave.  
Arlington, VA 22206



history, he served four terms in the Senate under four presidents – two Republicans and two Democrats.

**10:30 ANTIQUES ROADSHOW RECUR: BONANZAVILLE, HOUR 2** – Travel back in time at Bonanzaville in Fargo, North Dakota, for a half-hour *Recut*. One find is \$15,000-\$25,000.

## 30 Saturday

**6AM-6PM See the Saturday, March 23 listings.**

- 6:00 PBS NEWS WEEKEND** – John Yang anchors.
- 6:30 WASHINGTON WEEK WITH THE ATLANTIC** – R
- 7:00 IT'S ACADEMIC** – The long-running high school TV quiz show showcases the academic achievements of local D.C.-area students. Competing this week are Gaithersburg, Mount Vernon and Whitman high schools. **Airs 10am Saturdays, repeating 7pm; and Mondays, 3pm. Stream on the PBS App and at YouTube.com/wetapbs.**
- 7:30 VARIETY STUDIO: ACTORS ON ACTORS, SERIES 19** – A series features conversations between contemporary star actors. *Episode 4*. Emily Blunt with Anne Hathaway; Taraji P. Henson with Jeffrey Wright; Paul Mescal with Natalie Portman.
- 8:00 AMERICAN EXPERIENCE: THE VOTE** – Learn about the campaign that led to the passage of the 19th Amendment, granting American women the vote. *Part 3 of 4*. Discover how the pervasive racism of the time impacted women's fight for the vote during the final years of the campaign. Stung by a series of defeats in 1915, the suffragists concentrated on passing a federal amendment. **Repeats Sun 3/31, 4pm, 11pm**
- 9:00 AMERICAN EXPERIENCE: THE VOTE** – *Part 4 of 4*. Meet the unsung women whose tireless work would finally ban discrimination at U.S. polls on the basis of sex. Alice Paul and Carrie Chapman Catt advocated different strategies, but their combined efforts led to the 19th Amendment's passage in 1920. **Repeats Sun 3/31, 5pm, midnight**
- 10:00 AMERICAN EXPERIENCE: THE CANCER DETECTIVES** – R
- 11:00 10 MODERN MARVELS THAT CHANGED AMERICA** – Take a whirlwind tour of engineering feats in America. See how engineers connected the nation with bridges, rail networks and a continent-wide freeway system, and delivered water from distant rivers to our kitchen sinks.
- 12M FINDING YOUR ROOTS WITH HENRY LOUIS GATES, JR., SERIES 10** – *Encore Episode: Secret Lives*. R

## 31 Sunday

**6AM-11:30AM See the Sunday, March 24 listings.**

- 11:30 WASHINGTON WEEK WITH THE ATLANTIC** – R
- 12N NATURE: REMARKABLE RABBITS** – R
- 1:00 NOVA: A.I. REVOLUTION** – R
- 2:00 NOVA: STAR CHASERS OF SENEGAL** – R
- 3:00 AMERICAN EXPERIENCE: THE CANCER DETECTIVES** – R
- 4:00 AMERICAN EXPERIENCE: THE VOTE** – *Parts 3 & 4 of 4*. R
- 6:00 PBS NEWS WEEKEND** – John Yang anchors. **Repeats Monday, 7am**
- 6:30 HISTORY WITH DAVID RUBENSTEIN, SEASON 4** – *Episode 1 of 10*. *Ada Ferrer*. The Pulitzer Prize-winning author and historian discusses the intertwining of the U.S. and Cuba's foreign policy and domestic affairs.
- 7:00 LUCY WORSLEY'S ROYAL MYTHS AND SECRETS: QUEEN ANNE: THE MOTHER OF GREAT BRITAIN** – Join historian and presenter Lucy Worsley as she investigates why Queen Anne's powerful role in the forging of Great Britain has often been forgotten. Worsley shares the story of the salacious gossip about Anne's love life that helped destroy her image and legacy.
- 8:00 CALL THE MIDWIFE, SERIES 13** – *Part 3 of 8*. Violet and Matthew are worried about Fred's ability to serve as the mayor's consort. Later, Fred falls ill after a minor injury. Meanwhile, the Nonnatus team is thrown into turmoil when a newborn baby is diagnosed with bilateral hip dysplasia.
- 9:00 NOLLY ON MASTERPIECE** – *Part 3 of 3*. Nolly is working in the cutthroat world of theatre, still haunted by the question: why was she fired from *Crossroads*? But when an unexpected answer arrives, can she seize the chance to reprise her role as Meg for one final curtain call?
- 10:00 ALICE & JACK ON MASTERPIECE** – *Part 3 of 6*. Years after their last encounter, Jack receives a surprise invitation from Alice. Their feelings for each other soon surface, raising doubts about whether Alice is ready to be in a relationship with anyone.
- 11:00 AMERICAN EXPERIENCE: THE VOTE** – *Parts 3 & 4 of 4*. R

Via Antenna 26.3  
Comcast 266/1147  
Cox 801  
Fios 472  
RCN 38

**WETA**

**PBS  
KIDS**

The WETA PBS Kids channel offers a safe haven for young viewers, presenting educational programming 24 hours each day, seven days a week.

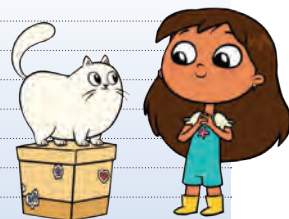
### WEEKDAYS ON WETA PBS KIDS

- Clifford the Big Red Dog, 6am
- Dinosaur Train, 6:30am
- Pinkalicious & Peterrific, 7am
- The Not-Too-Late Show with Elmo, 7:30am
- Sesame Street, 8am, 8:30am
- Work It Out Wombats!, 9am, 9:30am
- Daniel Tiger's Neighborhood, 10am, 10:30am
- Curious George, 11am, 11:30am
- Donkey Hodie, 12n, 12:30pm
- Elinor Wonders Why, 1pm
- Rosie's Rules, 1:30pm, 2pm
- Xavier Riddle and the Secret Museum, 2:30pm
- Alma's Way, 3pm, 3:30pm
- Lyla in the Loop, 4pm
- Nature Cat, 4:30pm
- Arthur, 5pm
- Odd Squad, 5:30pm
- Wild Kratts, 6pm, 6:30pm
- Lyla in the Loop, 7pm
- Molly of Denali, 7:30pm, 8pm
- Hero Elementary, 8:30pm
- Cyberchase, 9pm
- Let's Go Luna! 9:30pm
- Rosie's Rules, 10pm
- Xavier Riddle and the Secret Museum, 10:30pm
- Alma's Way, 11pm, 11:30pm

Visit [weta.org/schedule](http://weta.org/schedule) for complete WETA PBS Kids listings.

### WEEKDAYS ON WETA PBS, 8 AM – 3 PM

- Lyla in the Loop, 8am
- Wild Kratts, 8:30am
- Daniel Tiger's Neighborhood, 9am
- Rosie's Rules, 9:30am
- Sesame Street, 10am
- Work It Out Wombats!, 10:30am
- Donkey Hodie, 11am
- Pinkalicious & Peterrific, 11:30am
- Elinor Wonders Why, 12n
- Nature Cat, 12:30pm
- Curious George/Hero Elementary, 1pm
- Xavier Riddle & the Secret Museum, 1:30pm
- Molly of Denali, 2pm
- Alma's Way, 2:30pm



Rosie's Rules

### SUNDAYS ON WETA PBS, 6 AM – 9 AM

- Mister Rogers' Neighborhood, 6am
- Arthur, 6:30am
- Molly of Denali, 7am
- Alma's Way, 7:30am
- Lyla in the Loop, 8am
- Wild Kratts, 8:30am

## British Television at Its Best

The WETA UK channel is devoted to the best in British television programming, presenting beloved classics and contemporary series around the clock, seven days a week. WETA UK offers a full schedule of fine entertainment programming – featuring drama, mystery and comedy – in addition to documentary series and news reports.

## MARCH P.M. PROGRAMMING ON WETA UK

VISIT [WETA.ORG/SCHEDULE](http://WETA.ORG/SCHEDULE) FOR A PROGRAM LINEUP

*The Hour,  
Series 1 & 2 Marathon  
Sunday, 3/17, 11am-11pm*

|             | SUNDAY  | MONDAY  | TUESDAY  | WEDNESDAY  | THURSDAY  | FRIDAY  | SATURDAY  |
|-------------|---|---|--|--|---|---|---|
| <b>12pm</b> | In Their Own Words: Princess Diana (3/3); Epic Train Journeys (starts 3/24)   | Call the Midwife  | Call the Midwife (starts 3/5 with Series 9)  | Call the Midwife   | Call the Midwife  | Call the Midwife  | Celebrity Antiques Roadshow   |
| 12:30pm     |   |   |  |  |   |   |   |
| <b>1pm</b>  | Grantchester, Series 3 on Masterpiece (Series 4 starts noon, 3/10)  | Born and Bred   | Born and Bred  | Born and Bred  | Born and Bred   | Born and Bred   | • Doc Martin, Series 10<br>• RFDS, Series 2 (starts 3/16)   |
| 1:30pm      |   |   |  |  |   |   |   |
| <b>2pm</b>  | • Sister Boniface, Series 2<br>• Doc Martin, Series 6 (starts 3/31)   | • 3/4, 2-5pm: Miriam and Alan: Lost in Scotland, Series 1<br>• 3/11, 2-5pm: Miriam and Alan: Lost in Scotland, Series 2<br>• 3/18, 2pm: Miriam and Alan: Lost in Scotland, Series 2<br>• 3/18, 3-5pm: Adrian Dunbar: My Ireland | • Doc Martin, Series 10<br>• RFDS, Series 2 (starts 3/12)<br>• Ms. Fisher's Modern Murder Mysteries<br>• Hope Street, Ser. 2 (starts 3/12)   | Foyle's War, Series 3 & 4  | • Sister Boniface Mysteries<br>• Father Brown Mysteries, Ser. 9 (as of 3/14)  | • 3/1, 2-5pm: Miriam and Alan: Lost in Scotland, Series 1<br>• 3/8, 2-5pm: Miriam and Alan: Lost in Scotland, Series 2<br>• 3/15, 2pm: Miriam and Alan: Lost in Scotland, Series 2<br>• 3/15, 3-5pm: Adrian Dunbar: My Ireland  | • Ms. Fisher's Modern Murder Mysteries<br>• Hope Street, Series 2 (starts 3/16)   |
| 2:30pm      |   |   |  |  |   |   |   |
| <b>3pm</b>  | Father Brown, Series 9  | • 3/25, 2-5pm: Walking Victorian England  | • Ms. Fisher's Modern Murder Mysteries<br>• Hope Street, Ser. 2 (starts 3/12)  | • 3/6, 3-5pm: Van der Valk, Series 1 on Masterpiece<br>• 3pm: The Paris Murders, Series 1 (starts 3/13)<br>• 4pm: Astrid, Series 2 (starts 3/13) | • Father Brown Mysteries, Series 9<br>• Agatha Christie's Poirot (as of 3/14)   | • 3/22, 2-5pm: Walking Victorian England (Pts 1-3)<br>• 3/23, 2-5pm: Walking Victorian England (Pts 4-6)  | Frankie Drake Mysteries, Series 4   |
| 3:30pm      |   |   |  |  |   |   |   |
| <b>4pm</b>  | • Ms. Fisher, Ser. 2<br>• Around the World in 80 Days (starts 3/24)   | • 3/25, 2-5pm: Walking Victorian England  | Frankie Drake Mysteries, Series 4  | • 4pm: Astrid, Series 2 (starts 3/13)  | Sanditon, Series 2 on Masterpiece   |   | • Sister Boniface Mysteries, Series 2<br>• Doc Martin, Ser. 6 (starts 3/30)   |
| 4:30pm      |   |   |  |  |   |   |   |
| <b>5pm</b>  | Foyle's War, Series 4   | BBC News: The Context   | BBC News: The Context  | BBC News: The Context  | BBC News: The Context   | BBC News: The Context   | Foyle's War, Series 4   |
| 5:30pm      |   | BBC News America  | BBC News America   | BBC News America   | BBC News America  | BBC News America  |   |
| <b>6pm</b>  | • Les Misérables on Masterpiece (90 min 3/24)<br>• Doc Martin, Ser. 6 (starts 3/31)   | (Still) Open All Hours  | (Still) Open All Hours   | (Still) Open All Hours   | (Still) Open All Hours  | (Still) Open All Hours  | • Les Misérables (90 min on 3/16)<br>• Around the World in 80 Days (starts 3/23)  |
| 6:30pm      |   | As Time Goes By   | As Time Goes By  | As Time Goes By  | As Time Goes By   | <b>Mary Berry Makes It Easy</b>   |   |
| <b>7pm</b>  | Frankie Drake Mysteries, Series 4 (7:30pm 3/24)   | Celebrity Antiques Road Trip  | Celebrity Antiques Road Trip   | Celebrity Antiques Road Trip   | Celebrity Antiques Road Trip  | Celebrity Antiques Road Trip  | • Little Women<br>• Atlantic Crossing (starts 3/23)   |
| 7:30pm      |   |   |  |  |   |   |   |
| <b>8pm</b>  | • 3/3, 8-11pm: Miriam and Alan: Lost in Scotland, Series 1<br>• 3/10, 8-11pm: Miriam and Alan: Lost in Scotland, Series 2<br>• 3/24, 8:30-11:30pm: Walking Victorian England (Pts 1-3)<br>• 3/31, 8-11pm: Walking Victorian England (Pts 4-6) | • Doc Martin, Ser. 10 (to 9:06pm)<br>• <b>Royal Flying Doctor Service, Ser. 2</b> (starts 3/11)<br>• Ms. Fisher's Modern Murder Mysteries, Series 2<br>• <b>Hope Street, Ser. 2</b> (starts 3/11)                               | <b>Foreign Favourites</b><br>• 3/5, 8-10pm: Van der Valk, Series 1 on Masterpiece<br>• Starting 3/12: 8pm: <b>The Paris Murders, Series 1</b><br>• Starting 3/12: 9pm: <b>Astrid, Series 2</b><br>• 10pm: Nina, Series 1 | • Sister Boniface, Series 2<br>• <b>Doc Martin, Series 6</b> (starts 3/27)<br>Father Brown Mysteries, Series 9<br>Agatha Christie's Poirot       | • 3/7, 8-11pm: Miriam and Alan: Lost in Scotland, Series 2<br>• 3/14, 8pm: Miriam and Alan: Lost in Scotland, Series 2<br>• 3/14, 9-11pm: Adrian Dunbar: My Ireland<br>• 3/21, 8-11pm: <b>Walking Victorian England</b> (Pts 1-3)<br>• 3/28, 8-11pm: <b>Walking Victorian England</b> (Pts 4-6) | <b>Masterworks Showcase</b><br>• 8pm: Foyle's War, Series 4<br>• 9pm: Les Misérables on Masterpiece (90 min on 3/15)<br>• Starting 3/22, 9pm: <b>Around the World in 80 Days on Masterpiece</b><br>• 10pm: <b>Little Women on Masterpiece</b> (starts 3/1; 10:30pm on 3/15)<br>• Starting 3/22, 10pm: <b>Atlantic Crossing on Masterpiece</b> | • Agatha Christie's Poirot (3/2, 3/9 & 3/30, 90 min)<br>• Midsomer Murders (3/16 & 3/23, 2 hrs)<br>• Variety Studio (3/2-3/9)<br>• Miss Marple (3/30, 90m)<br>• Ms. Fisher's Modern Murder Mysteries, Ser. 2<br>• Agatha Christie's Poirot (3/16)<br>• Midsomer Murders (3/23, 2 hrs) |
| 8:30pm      |   |   |  |  |   |   |   |
| <b>9pm</b>  |   |   |  |  |   |   |   |
| 9:30pm      |   |   |  |  |   |   |   |
| <b>10pm</b> |   |   |  |  |   |   |   |
| 10:30pm     |   |   |  |  |   |   |   |
| <b>11pm</b> | Open All Hours (11:30pm on 3/24)  | BBC News  | BBC News   | BBC News   | BBC News  | BBC News (11:30pm on 3/15)  | • Guilt, Series 2 on Mast. (to 1am)<br>• Paris Murders, Ser. 1 (starts 3/16)  |
| 11:30pm     |   | • Doc Martin, Series 10<br>• RFDS, Series 2 (starts 3/11)   | • Van der Valk (3/5)<br>• The Paris Murders, Series 1  | • Sister Boniface, Ser. 2<br>• Doc Martin, Ser. 6 (starts 3/27)  | [See 8-11pm]  | Foyle's War, Ser. 4 (12m 3/15)  |   |
|             | SUNDAY  | MONDAY  | TUESDAY  | WEDNESDAY  | THURSDAY  | FRIDAY  | SATURDAY  |

# WETA UK Highlights

## Royal Flying Doctor Service, Ser. 2

8 p.m. Mondays starting March 11 on WETA UK

The gripping medical drama set in the skies and landscapes of the Australian Outback returns with eight new Season 2 episodes. In the series, the modern-day heroes of the Royal Flying Doctor Service (RFDS) navigate private lives as turbulent and profound as the heart-stopping emergencies they attend. The episodes begin a year after Dr. Eliza Harrod left Broken Hill to return to England, and much has changed, with lives at RFDS Southeast carrying on — and medical needs unrelenting. The determined team faces some of its most high-stakes challenges to date — in the air, on land, with each other and within themselves. Kicking off the season's challenges, staff shortages and an unreachable Leonie have the staff working at their limits amid the chaos of the White Cliffs rodeo, leaving Pete and new mental health nurse Chaya alone to deal with a multi-casualty car accident that forces Pete to act outside of his scope of practice. Binge-watch Seasons 1 and 2 with WETA Passport.



COURTESY/PBS/JOHN PLATT

## The Paris Murders, Series 1

8 p.m. Tuesdays starting March 12 on WETA UK

This fast-paced, suspenseful French police drama — translated as *The Paris Murders* but titled *Profilage* in France since its 2009 premiere — is from curated international drama series Walter Presents. The storylines follow Chloé Saint-Laurent (portrayed by Odile Vuillemin), a psychologist specializing in criminology who serves as an intuitive police profiler for a homicide division. She works to investigate puzzling murder cases with Detective Rocher (Philippe Bas), a hard-nosed cop with a cranky disposition and no time for small talk. Saint-Laurent's experience and sensitivity allow her to decipher the state of mind of murderers and victims alike, aiding investigators from the Judicial Police (DPJ) in Paris. Based on actual criminal cases, the English-subtitled series features 12 episodes in Season 1. Binge-watch seven seasons with WETA Passport.



WALTER PRESENTS/PBS

## "Before They Were Stars"...

in Saturday mysteries at 8 p.m. on WETA UK

WETA UK presents Saturday-night mysteries with a special twist this month, airing episodes of classic crime dramas that featured future stars of television and film — appearing in secondary roles. As you enjoy these Agatha Christie and *Midsomer Murders* classics, watch for the following actors, among other familiar faces: Michael Fassbender in *Agatha Christie's Poirot: After the Funeral* on March 2; Emily Blunt in *Agatha Christie's Poirot: Death on the Nile* on March 9; Orlando Bloom in *Midsomer Murders, Series 3: Judgment Day* on March 16; Roger Allam in *Midsomer Murders, Series 1: Faithful Unto Death* on March 23; and Damian Lewis (right) in *Agatha Christie's Poirot: Hickory Dickory Dock* on March 30. The popular Saturday mystery showcase expands to double features starting March 16.



ITV

### Also on WETA UK in March:

- A marathon presentation of 1950s-set British political thriller *The Hour* (Series 1 & 2), starring Romola Garai, Dominic West and Ben Whishaw among a sterling ensemble cast, airs Sunday, March 17, 11 a.m.-11 p.m.
- New cooking series *Mary Berry Makes It Easy* airs Fridays at 6:30 p.m. starting March 1.
- *Walking Victorian England* explores history, Thursdays, March 21 & 28, 8-11 p.m.
- *Miriam and Alan: Lost in Scotland* (Miriam Margolyes/Alan Cumming), 8 p.m. Thursdays, Feb. 29-March 14.

WETA Metro is the streaming and broadcast television channel that features popular PBS programming and engaging content curated for our local audience, including offerings spotlighting the Metro D.C. community. The channel is simulcast with WETA PBS most evenings. Each day on WETA Metro, enjoy local programs, news and public affairs offerings (such as *PBS NewsHour*, weekdays at 6 p.m./11 p.m.), and lifestyle and cultural shows.

VISIT [WETA.ORG/SCHEDULE](https://weta.org/schedule) FOR A COMPLETE PROGRAM LINEUP

Stream at [weta.org/livestream](https://weta.org/livestream) or via the PBS App



WORLD HISTORY ARCHIVE/ALAMY STOCK PHOTO

## American Masters: Marian Anderson: The Whole World in Her Hands

Friday, March 1 at 9 p.m. on WETA Metro

Airing as part of Women’s History Month programming, a special two-hour *American Masters* film explores the life, career, art and legacy of the famed contralto and civil rights icon Marian Anderson. Best known for her performance in a famed April 1939 concert, Anderson, in a bold protest against racial intolerance, sang to the nation on the steps of the Lincoln Memorial in Washington, D.C., after being denied use of Constitution Hall by the Daughters of the American Revolution. The gifted

pioneer overcame prejudice and financial hardship to become a voice for justice, an internationally renowned master of her craft, and the first African American to sing a leading role at the Metropolitan Opera.



RONALD REAGAN PRESIDENTIAL LIBRARY

## American Experience: Sandra Day O'Connor: The First

Thursday, March 14 at 8 p.m. on WETA Metro

WETA reprises a special *American Experience* program spotlighting Sandra Day O’Connor, the first woman appointed to the United States Supreme Court. For 191 years, the Court was populated only by men until President Ronald Reagan nominated O’Connor as the first female justice in 1981 — and she received unanimous Senate approval. During her more than two decades on the Court, O’Connor would defy expectations and significantly influence the direction of the Court and the country. She became the critical swing vote

on cases involving some of the 20th century’s most controversial issues — and she cast the decisive vote in *Bush v. Gore*. Based on *First: Sandra Day O’Connor* by author Evan Thomas, this biographical portrait recounts the life of a pioneering woman who both reflected and shaped an era.



©DARLEY NEWMAN & VOICE, LLC

## Travels with Darley, Series 11

Saturdays & Mondays at 7:30 p.m. starting March 16 on WETA Metro

WETA Metro features a new season of *Travels with Darley*, which follows Washingtonian Darley Newman as she explores locations around the globe and close to home with local guides. Featuring a mix of culture, history and cuisines, Season 11’s 13 episodes take in Alabama’s farm-to-table food and historic landmarks; Cajun celebrations in Lafayette, Louisiana; and North Dakota’s quirky attractions. Newman also ventures along Route 66 in Illinois; dives into American history on a “Revolutionary Road Trip”; and savors Korean food traditions in Seoul and Busan. In an episode of local note, the host spotlights Northern Virginia’s history and diverse cuisine.

The WETA World channel is a 24/7 news and public affairs service devoted to fact-based nonfiction programming, sharing broad perspectives, stories and ideas. WETA World informs and educates, presenting award-winning documentaries and domestic and international news broadcasts. The channel features a slate of original programs that examine issues with a diversity of voices and illuminate conflicts, movements and cultures around the globe.

**VISIT [WETA.ORG/SCHEDULE](http://WETA.ORG/SCHEDULE) FOR A COMPLETE PROGRAM LINEUP**

*Real Stories from Around the World*

## Without Precedent: The Supreme Life of Rosalie Abella

**Monday, March 18 at 8 p.m. on WETA World**

**A**iring as part of a wide slate of Women's History Month programming on WETA World, a 90-minute documentary explores the life and legacy of a legal icon. "If I have a Canadian sister, her name is Rosie Abella," the late U.S. Supreme Court Justice Ruth Bader Ginsburg once said of Rosalie Silberman Abella, former justice of the Supreme Court of Canada. The child of Holocaust survivors, Abella was born in 1946 in Stuttgart, Germany, in a displaced-persons camp; and her family came to Canada in 1950 as refugees. The perspective gained from her personal history shaped her legal career, and in public speeches, she intertwines her family story with discussions of human rights, morality and constitutional law. The youngest judge in Canadian history, she was also the country's first female Jewish Supreme Court justice.



DAVE CHAN

## Local USA: Minnesota's Alt-Meat Revolution

**Monday, March 25 at 9 p.m. on WETA World**

**O**n *Local USA*, the series of half-hour documentaries that feature stories curated around a single theme, an episode looks into the roots and impact of the plant-protein phenomenon that is exploding across the globe. As the demand for plant-based alternatives to meat grows, so does the demand for new methods of farming and food production. In the small rural town of Dawson, Minnesota, "alt-meat" is nothing new — soybean processing dates back to the 1950s. Now, Puris, North America's largest manufacturer of pea protein (think "Beyond Burger"), has moved into town with a promise to revolutionize the agricultural system. What impact will it have on the residents of Dawson and surrounding rural communities?



PIONEER PBS

## America ReFramed: A Woman on the Outside

**Thursday, March 28 at 8 p.m. on WETA World**

**T**his month on *America ReFramed*, a film — part observational documentary, part family album — follows Kristal, who, growing up, witnessed the relentless grip of incarceration on the men in her life. She channeled that struggle into keeping families connected, both as a social worker and with her van service that drives families to visit loved ones in far-off prisons. But when Kristal's father and brother return to Philadelphia, her happiness meets the realization that release doesn't always mean freedom. Passionate and resilient, Kristal remains determined to carve out a different future for herself and for her young nephew, Nyvae. *A Woman on the Outside* is a tender portrait of family members striving to love in the face of a system built to break them.



COURTESY: A WOMAN ON THE OUTSIDE





Siwoo Kim

TED DU-WANG

## Washington Arts Ensemble Presents Czech Landscapes on *Front Row Washington*

Monday, March 11 at 9 p.m.

This month on *Front Row Washington*, enjoy a Czech-inspired performance from the Arts Club of Washington featuring the Washington Arts Ensemble. In this concert, hear Siwoo Kim on violin, Loewi Lin on cello, and Christopher Schmitt on piano as they perform piano trios by iconic Czech composers

Antonín Dvořák and Bedřich Smetana (whose 200th birth anniversary is this year). The November 2023 performance spotlights the works of these composers, who brought their national heritage together with Germanic classical music traditions to create a unique sound that took the music world by storm. Join host John Banther each Monday night at 9 p.m. on WETA Classical for *Front Row Washington*, presenting live concert recordings that showcase performances around Greater Washington by world-class artists and ensembles.



PUBLIC DOMAIN

Muse Playing the Harp (c.1880)  
by Ernest Hébert

## Songs and Hymns of the Soul on *Choral Showcase*

Sundays at 9 p.m. throughout March

WETA Classical's *Choral Showcase* offers "Songs and Hymns of the Soul" this month, starting **March 3** with sacred hymns and chant that speak to the soul of Ukraine, from Ukrainian composers past and present. On **March 10**, three sacred cantatas convey the journey of the soul; from J.S. Bach, the "Trauerode" (Mourning Ode) and early funeral cantata the "Actus Tragicus" are matched with the Bach-inspired *Songs of the Soul* by Robert Kyr. Then, the heart and soul of Ireland shine forth on St. Patrick's Day, **March 17**, with traditional songs and airs arranged for chorus and instruments, and hymns and antiphons in praise of Irish saint Columba. On Palm Sunday, **March 24**, the heart of a grieving father (the composer) mourning the loss of his children is laid bare in Antonin Dvořák's moving *Stabat Mater*; and on Easter Sunday, **March 31**, the journey concludes with a stirring performance of Handel's *Messiah*. Tune in to *Choral Showcase* each Sunday at 9 p.m. on WETA Classical.

## Opera Matinee Presents Verdi's *Requiem*

Saturday, March 30 at 1 p.m.

On the *Opera Matinee* bill this month is Verdi's *Requiem* (**March 30, 1 p.m.**), a moving, monumental masterpiece that is one of the repertoire's outstanding showcases of vocal, choral and orchestral writing. In this performance from



Verdi's *Requiem*

RICHARD TERMINI/MET OPERA

September 2023, the Metropolitan Opera chorus, orchestra and master singers combine forces under the direction of Met Music Director Yannick Nézet-Séguin. Earlier in the month, presentations include a *Listeners' Choice* program (**March 2, 1 p.m.**) from great Met broadcasts; a new production of Verdi's *La Forza del Destino* (**March 9, noon**) with Lise Davidsen; Puccini's *Turandot* (**March 16, 1 p.m.**); and Gounod's *Roméo et Juliette* (**March 23, 1 p.m.**) with Nadine Sierra, Benjamin Bernheim and Will Liverman. Tune in each Saturday afternoon on WETA Classical for the best in opera on *Opera Matinee*.

**Sign up for the WETA Classical Newsletter!** Subscribe to learn about the classical music content you value — via emails sent biweekly, right to your inbox. Visit [weta.org/classicalnewsletter](http://weta.org/classicalnewsletter) to sign up.

# Classical for Washington

## NSO Showcase: The Road Not Taken

Wednesday, March 6 at 9 p.m.

The National Symphony Orchestra's recent European tour took the ensemble to Spain, Germany and Italy — but not to Austria, England and France. This month's *NSO Showcase* program highlights will make these other stops; enjoy the journey! First, NSO Music Director Gianandrea Noseda leads the orchestra in Johann Strauss II's "Tales from the Vienna Woods." The famed woods are in the foothills of the Alps, and a favorite retreat for Viennese citizens eager to enjoy some fresh country air. Strauss' charming waltz is replete with folkdance themes, birds and horn calls.

Next, England is on the itinerary, represented by Gemma New's reading of Vaughan Williams' "Fantasia on a Theme" by Thomas Tallis, and the NSO's performance, with Noseda, of Weber's "Oberon Overture." Weber traveled to London to set this opera, even

learning English to better understand the libretto. Sadly, he died of tuberculosis in that city at the early age of 40.

Lastly, French conductor Louis Langlée (director of the Théâtre national de l'Opéra comique and former music director of the Cincinnati Symphony Orchestra and Mostly Mozart Festival) leads performances of several well-loved French masterpieces, including Debussy's "Prelude to the Afternoon of a Faun" and Ravel's "Boléro"; and Yan Pascal Tortelier conducts the orchestra in six movements from Bizet's *l'Arlésienne* suites.

*NSO Showcase* airs on WETA Classical and streams all month on [wetaclassical.org](http://wetaclassical.org).



VASSINE EL MANSOURI/ELMAN STUDIO

## Classical Breakdown Podcast Highlights Concerto for Orchestra by Joan Tower

March 19 at [classicalbreakdown.org](http://classicalbreakdown.org)

In WETA Classical's popular biweekly *Classical Breakdown* podcast — which earlier this year reached a milestone of 100 episodes at [classicalbreakdown.org](http://classicalbreakdown.org) — host John Banther takes classical music fans behind the scenes with interviews, deep dives and analysis. During Women's History Month, *Classical Breakdown's* March 19 episode presents a fascinating exploration of a work by American composer Joan Tower — her 1991 *Concerto for Orchestra*. At the time, the idea of a concerto for orchestra wasn't new, but Tower took it to a different level. In a typical "concerto" for orchestra, sections and principal players are highlighted in virtuosic and serene passages, and everyone gets their moment in the spotlight. But Tower wasn't intending to write that kind of work. This podcast episode explores how Tower plays with the concerto genre, what she does differently, what to listen for, and more.

At the podcast site, find many other *Classical Breakdown* episodes devoted to women composers and women performing artists. Biography episodes, for example, explore the lives of Cécile Chaminade, Fanny Mendelssohn, Clara Schumann, Florence Price, Amy Beach and Germain Tailleferre; piece-analysis episodes spotlight works by Price, Beach, Louise Farrenc, Margaret Bonds and many others; and interviews illuminate the work of women conductors, concertmasters (with the NSO's Nurit Bar-Josef), individual artists (including Sue Heineman, principal bassoon of the NSO) and cultural entrepreneurs (such as pianist Wu Han). Visit [classicalbreakdown.org](http://classicalbreakdown.org), sample episodes and enjoy this deeply informative, entertaining resource celebrating classical music.



COURTESY THE ARTIST

## WETA Passport

Stream *Masterpiece* dramas and much more with WETA Passport, our popular member benefit that provides you with access to an extensive library of the best public television programs! You're ready to activate now at [pbs.org/passport](https://pbs.org/passport) if you see a four-word activation code above your name and address at left; or go to [weta.org/passport](https://weta.org/passport) to make your qualifying donation of \$60 (or \$5 monthly) to start enjoying WETA Passport today.

Co-Anchors Amna Nawaz and Geoff Bennett



## Stay Informed with News Reports, Analysis and Special Coverage

Tune in to WETA news and public affairs productions on WETA PBS & WETA Metro; stream on the PBS App

**PBS NewsHour** Weekdays at 7 PM on WETA PBS; 6 PM & 11 PM on WETA Metro

**PBS News Weekend** Saturday/Sunday at 6 PM

**State of the Union 2024 – A PBS NewsHour Special Report** Thursday, March 7 at 9 PM

**Washington Week with *The Atlantic*** Fridays at 8 PM

Visit [pbs.org/newshour](https://pbs.org/newshour) and [pbs.org/washingtonweek](https://pbs.org/washingtonweek) to learn more.

**WETA**